

Sole la peletera

1^{er} Sax alto - clarinete

Handwritten musical score for Saxophone Alto/Clarinet. The score is written on ten staves. It begins with a treble clef, a key signature of one sharp (F#), and a 2/4 time signature. The first staff contains a treble clef and a common time signature. The piece is marked "Toccata" and starts with a forte (f) dynamic. The score includes various musical notations such as eighth and sixteenth notes, rests, and dynamic markings like "p.p.", "ff.", and "Coda". The piece concludes with a Coda section on the final staff.

Sole la peletera

Sax tenor - Clarinet.

Handwritten musical notation on a five-line staff, showing a treble clef, a common time signature (C), and a 2/4 time signature.

Fox Trot.

Sax.

First system of handwritten musical notation. The top staff is for the saxophone, starting with a treble clef and a common time signature. It includes dynamic markings *ff* and *pp*. The bottom staff shows the piano accompaniment with chords and bass notes.

Second system of handwritten musical notation, continuing the saxophone and piano parts.

Third system of handwritten musical notation, continuing the saxophone and piano parts.

Fourth system of handwritten musical notation, continuing the saxophone and piano parts.

Fifth system of handwritten musical notation, continuing the saxophone and piano parts.

Sixth system of handwritten musical notation. The piano part includes dynamic markings *pp*, *f*, and *ff*.

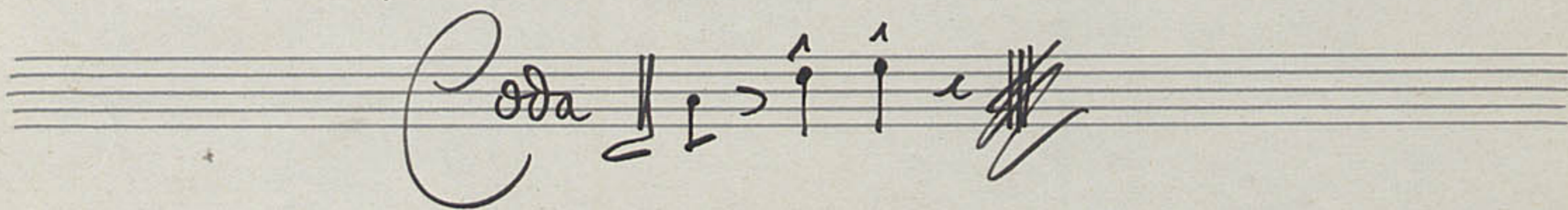
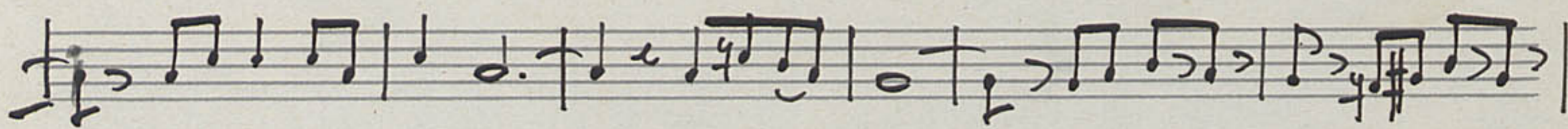
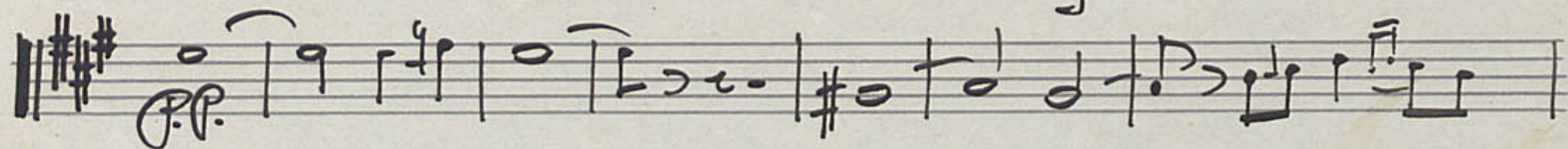
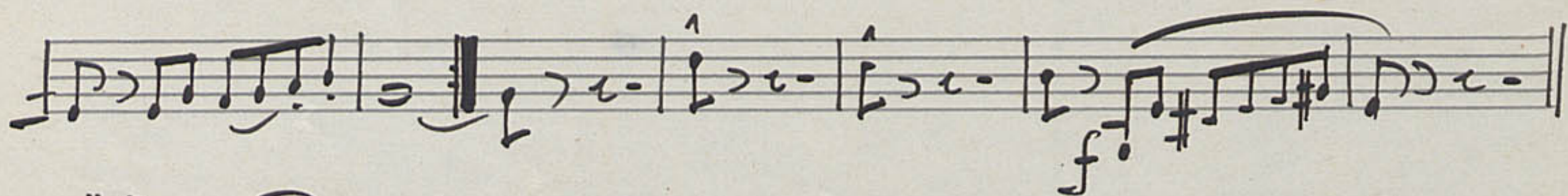
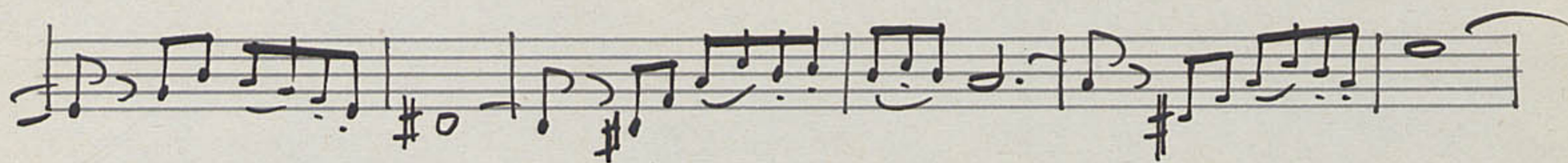
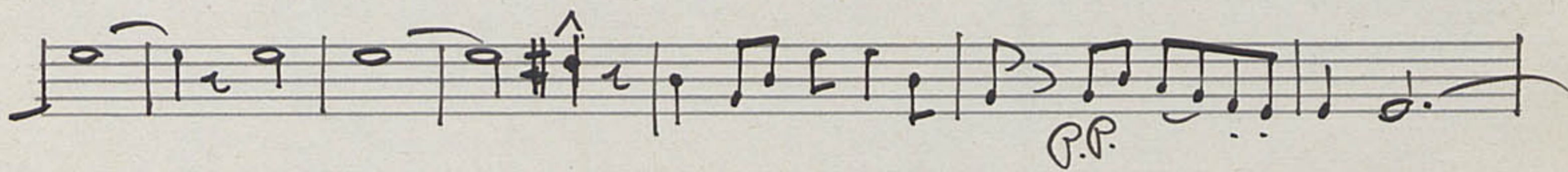
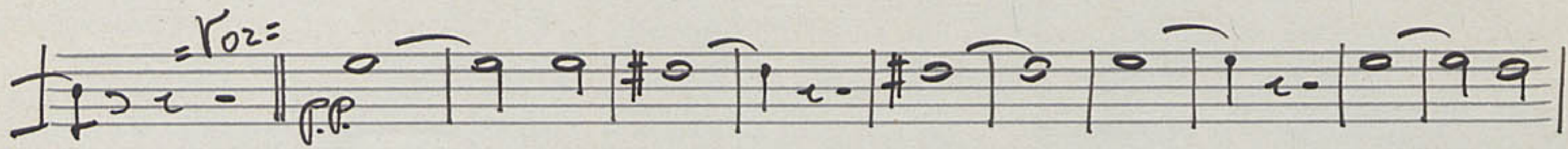
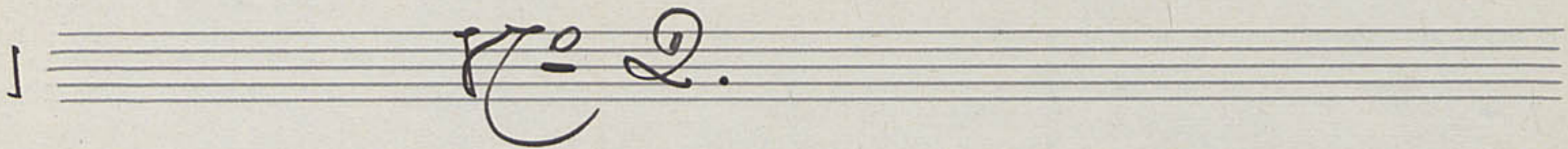
Seventh system of handwritten musical notation, continuing the saxophone and piano parts.

Eighth system of handwritten musical notation, ending with a double bar line and a repeat sign. The word "Coda." is written above the staff.

Ninth system of handwritten musical notation, labeled "Coda." at the beginning, showing a few final notes and a double bar line.

Sole la peletera.

3^{er}. Sax alt.



Sole la peletera

Trumpetes.

Handwritten musical notation on a five-line staff, including a treble clef, a key signature of two flats, and a 2/4 time signature.

First staff of music, labeled "Fox trot" in the left margin. It begins with a treble clef, a key signature of two flats, and a 2/4 time signature. The notation includes various rhythmic values and accidentals.

Second staff of music, featuring dynamic markings *ff*, *mp*, and *ff*. It includes the handwritten notes "Melodia a tempo da" and "Sordinas". The notation shows a sequence of notes with stems and beams.

Third staff of music, starting with a dynamic marking of *ff* and the instruction "Stacc.". The notation consists of eighth and sixteenth notes with stems.

Fourth staff of music, featuring a dynamic marking of *ff* and a handwritten "2³". The notation includes eighth notes and rests.

Fifth staff of music, containing eighth notes and rests with stems.

Sixth staff of music, featuring eighth notes and rests with stems.

Seventh staff of music, including a dynamic marking of *ff* and a handwritten "2³". It features a section of music that is heavily scribbled out with diagonal lines.

Eighth staff of music, featuring eighth notes and rests with stems.

Ninth staff of music, including a dynamic marking of *f* and a handwritten "2". The notation shows eighth notes and rests.

Tenth staff of music, featuring a dynamic marking of *f* and the word "Coda" written above the staff. It includes eighth notes and rests.

Eleventh staff of music, starting with the word "Coda" written above the staff. It includes a few notes and a large, decorative flourish at the end of the staff.

Sole la peletera

Frumbò o Celto

foxtrot

Sordina

Sordina

Handwritten musical score for 'Sole la peletera' by Frumbò o Celto. The score is written on ten staves. The first staff begins with a treble clef, a key signature of two flats (B-flat and E-flat), and a 2/4 time signature. The tempo is marked 'foxtrot'. The first staff includes a 'Sordina' instruction. The second staff also has a 'Sordina' instruction. The score features various rhythmic patterns, including eighth and sixteenth notes, and rests. There are several dynamic markings: 'pp' (pianissimo) and 'ff' (fortissimo). A large, curved scribble is present on the left side of the score, spanning from the third staff down to the sixth staff. The word 'Coda' is written in the seventh staff, followed by a double bar line and a fermata. The eighth staff also contains the word 'Coda' and ends with a double bar line and a fermata. The final two staves are empty.

Sole la peletera

Baix. - Fuba

no 2.

Foxtrot. $\text{♩} = 55$ $\text{♩} = 91$ $\text{♩} = 102$

Musical notation line 2

Musical notation line 3

Musical notation line 4

Musical notation line 5

Musical notation line 6

Musical notation line 7

Musical notation line 8

Musical notation line 9

Coda musical notation

Sole Pa peñera

Drums

No 2.

Foxtrot

C. china.

Vol.

con escoba de alambre al plato.

Caja.

C. china

Coda

Sole Papeletera

Violins

Andante

Forstrot. *ff* *Divisi.*

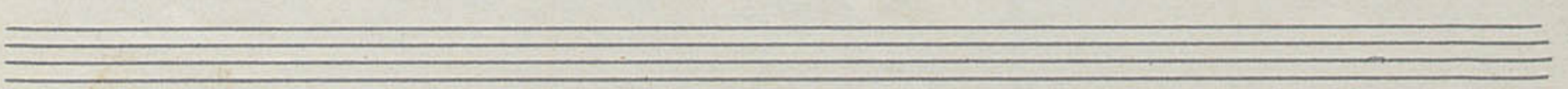
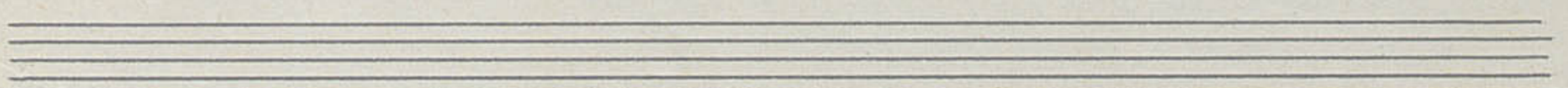
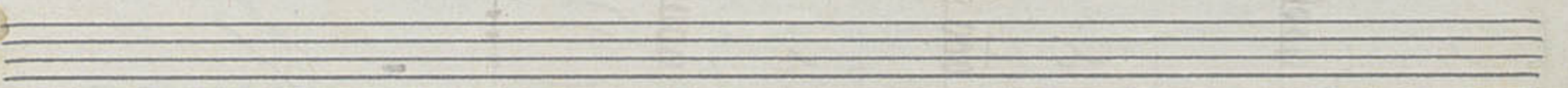
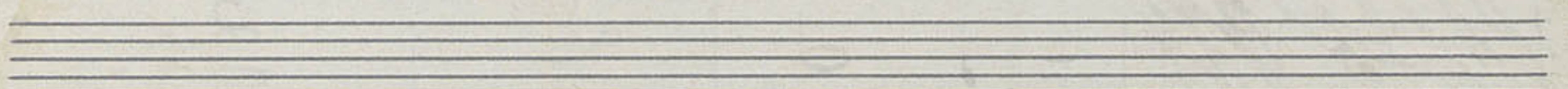
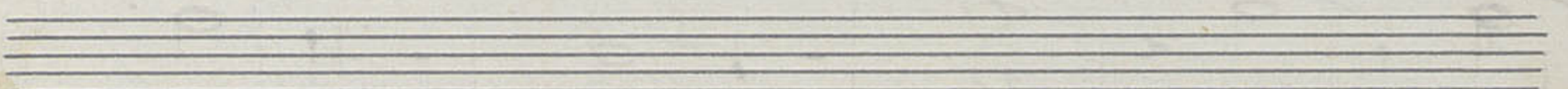
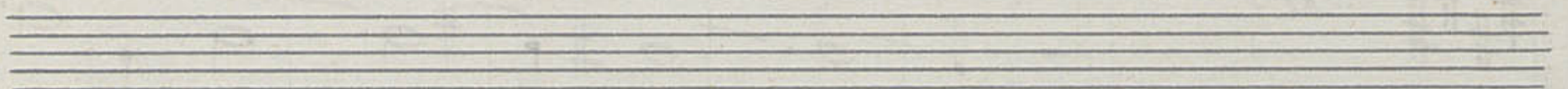
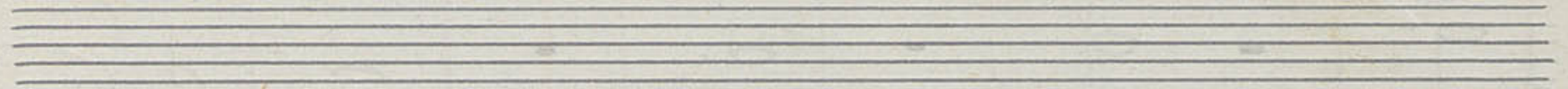
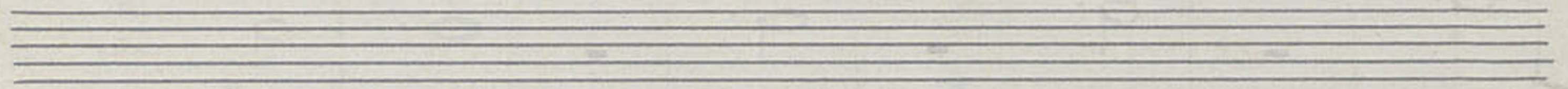
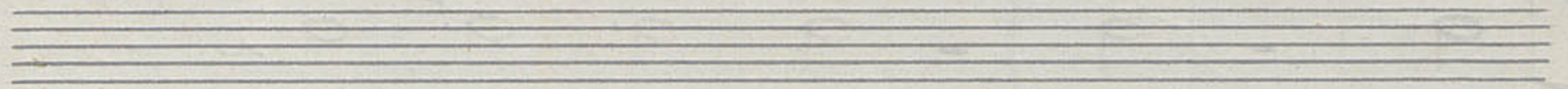
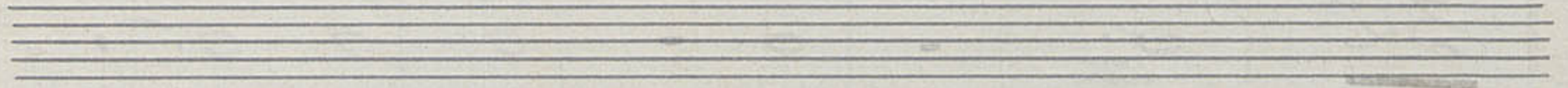
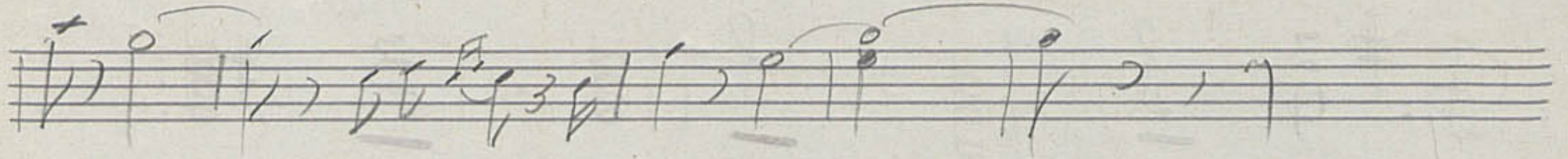
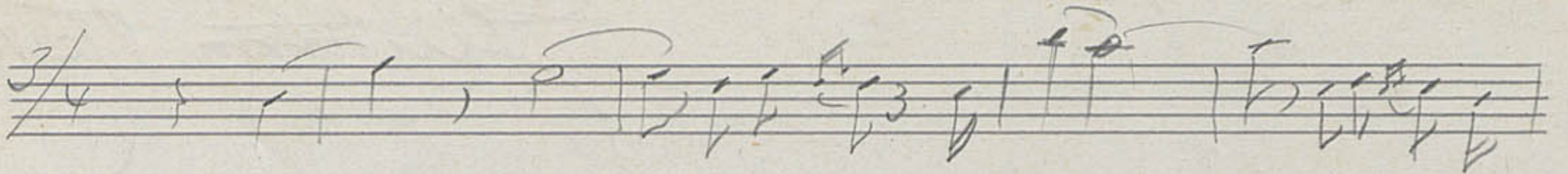
Ando. *Coda*

Coda

Sole lapeletera

Juittama Laviano

Handwritten musical score for "Sole lapeletera" by Juittama Laviano. The score consists of ten staves. The first staff is a treble clef with a key signature of one sharp (F#) and a 3/4 time signature. It contains a series of chords and rests. The second staff begins with a "32" time signature and contains a sequence of notes with stems. The third, fourth, and fifth staves continue this melodic line with various note values and rests. The sixth staff introduces a key signature change to three sharps (F#, C#, G#) and continues the melody. The seventh and eighth staves further develop the melodic line. The ninth staff contains a large section of the music that has been heavily scribbled out with black ink, followed by a few notes and rests. The tenth staff contains more notes and rests, also with some scribbles at the end. The bottom of the page shows two empty staves.



Sole la peñera

No 2

Piano. *For.*

= Foxtrot =

= marcato =

Handwritten musical score for piano, first system. The score is written on four staves. The first two staves are a grand staff with treble and bass clefs. The music consists of several measures of chords and melodic lines. The key signature has one flat (B-flat). The notation includes various note values, rests, and dynamic markings. The word "Coda." is written in the second measure of the third staff. The system concludes with a double bar line and the dynamic marking *pp* (pianissimo).

Handwritten musical score for piano, second system. The score is written on four staves. The first two staves are a grand staff with treble and bass clefs. The music consists of several measures of chords and melodic lines. The key signature has one flat (B-flat). The notation includes various note values, rests, and dynamic markings. The word "Coda" is written in the first measure of the first staff. The system concludes with a double bar line and a wavy line indicating the end of the piece.

No 3.

Ger. Sax alt

Schotis

Handwritten musical notation for the first system, including dynamics like *ff*, *pp*, and *f*, and a *Coda* marking.

Handwritten musical notation for the second system, featuring various rhythmic patterns and dynamic markings.

Handwritten musical notation for the third system, including accents and dynamic markings.

Handwritten musical notation for the fourth system, featuring a *4/4* time signature and various rhythmic patterns.

Handwritten musical notation for the fifth system, including a *pp* dynamic marking.

Handwritten musical notation for the sixth system, including a *Coda* marking and a large scribble at the end.

No 3

Trombon - Cello

Adagio *forzina*

ff

Code

f

Code

No 3

Baix-fuba

Schotis $\text{B}^{\flat}\text{B}^{\flat}\text{B}^{\flat}$ C P.P.

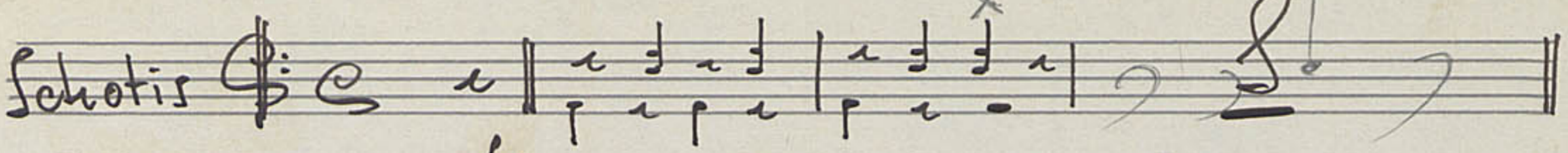
ff

P.P.

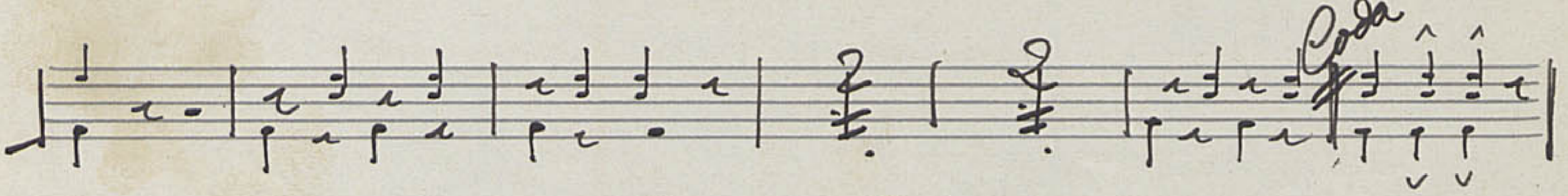
Coda

Coda

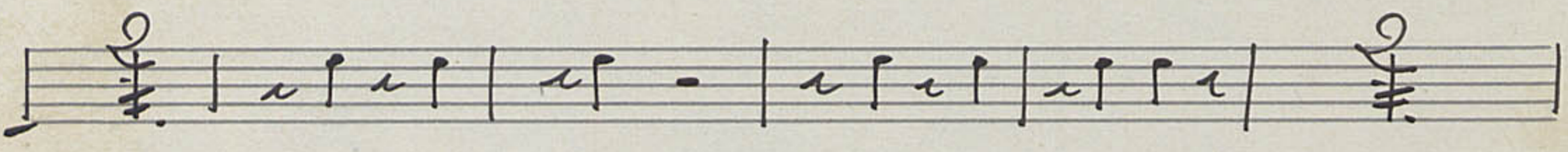
No 3

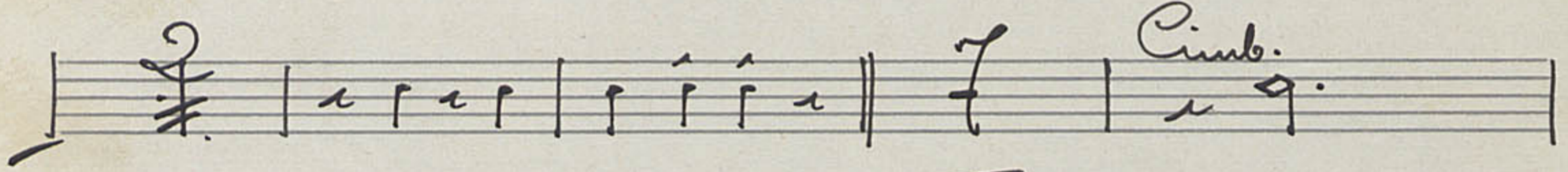
Schotis G C 

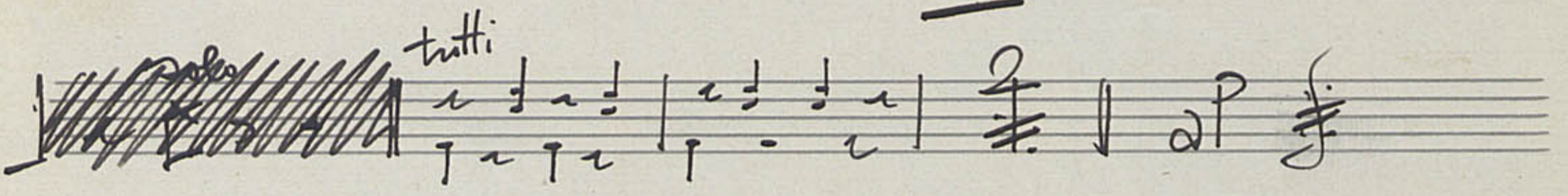
P. *f.* 

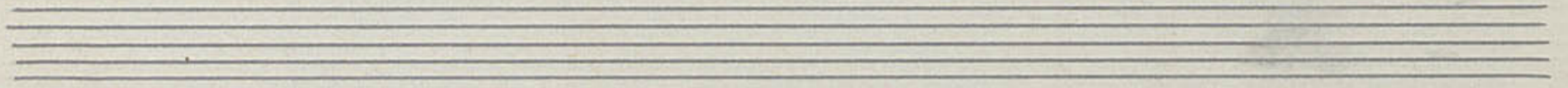


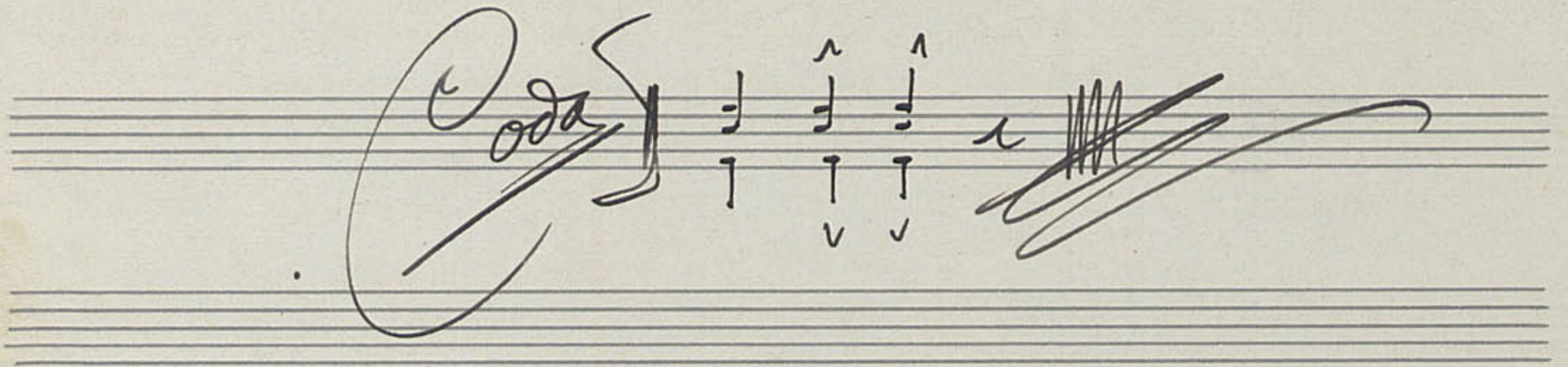
cimb. *solo* *B. al plat.* 

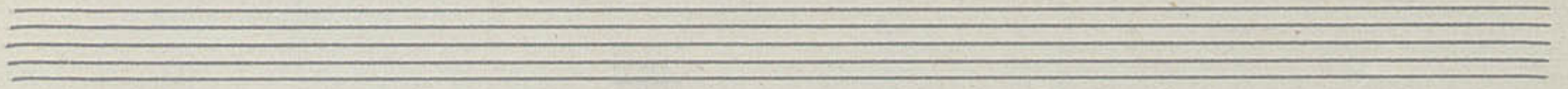


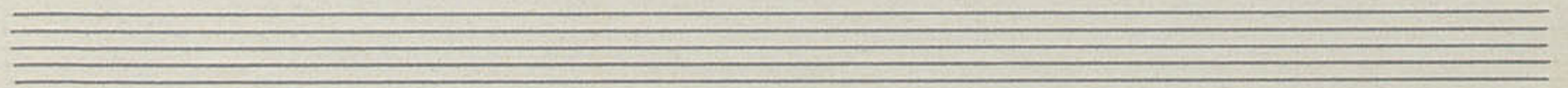
Cimb. 

~~...~~ *tutti* 



Coda 





Ho 3

Violines

Handwritten musical score for Violins, Op. 3. The score consists of 12 staves of music. It begins with a treble clef, a key signature of three flats (B-flat, E-flat, A-flat), and a 3/4 time signature. The first staff starts with a forte (f) dynamic and includes a first ending bracket. The second staff has a piano (p) dynamic and a "Divisi" instruction. The third staff features a first ending bracket. The fourth staff concludes with a "Coda" section. The fifth staff has a first ending bracket. The sixth staff has a first ending bracket. The seventh staff has a first ending bracket. The eighth staff has a first ending bracket. The ninth staff has a first ending bracket. The tenth staff has a first ending bracket. The eleventh staff has a first ending bracket. The twelfth staff concludes with a "Coda" section and a large flourish.

Sole la pelotera

No 6

Sax 1^{er} ; Clarinet.

all^{to} Clarinet

ff.

P.

stacc.

D.C.

Sole la peñera

Nº 6

3^{er} Sax alt.

all^{to}.

ff

1 2 a

D.C.

Sole Paperetera

No 6

Sax Tenor = Clarinet.

all^{to} Clarinet

Sole la peletera

No 6

Erumpeter.

All^{to} $\text{G} \text{ major}$ $\frac{3}{8}$ *f. Stacc.* *Ordinal*

Stacc. *Solo*

Solo

luis

Sole la peleterera

no 5

Fronobis

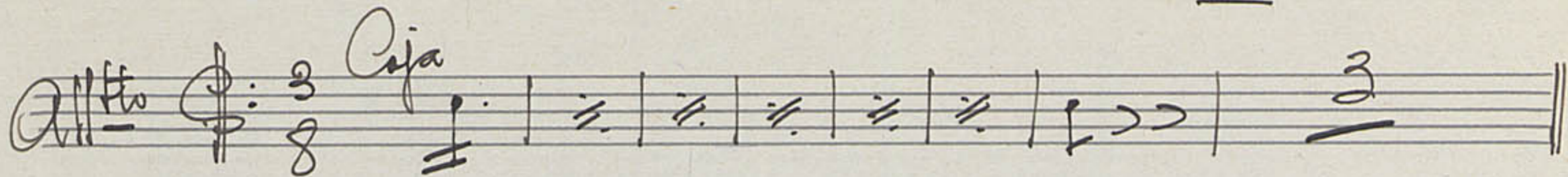
Handwritten musical score for guitar. The score consists of seven staves of music. The first staff is in treble clef, key of D major (three sharps), and 3/8 time. It begins with the tempo marking "Allegro" and a dynamic marking "f". The second staff is in bass clef, 2/4 time, and includes the instruction "Sordina". The score contains various rhythmic patterns, including eighth and sixteenth notes, and rests. There are some corrections and markings, such as "1a" and "2a" above a section of the fifth staff, and a large scribble over a portion of the same staff. The piece concludes with a double bar line and a final flourish on the seventh staff.

Sole Pa peletera

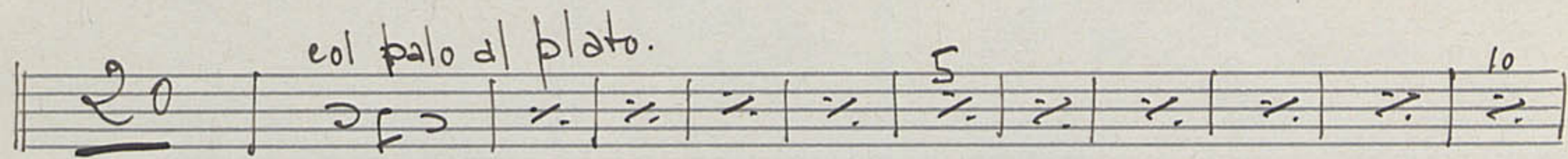
nº 6

Drums

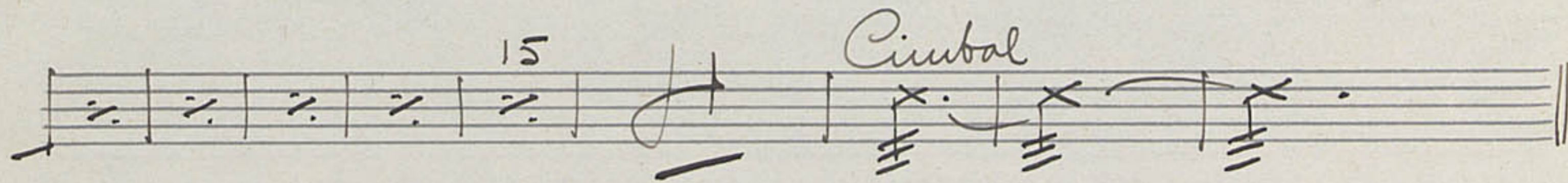
Caja



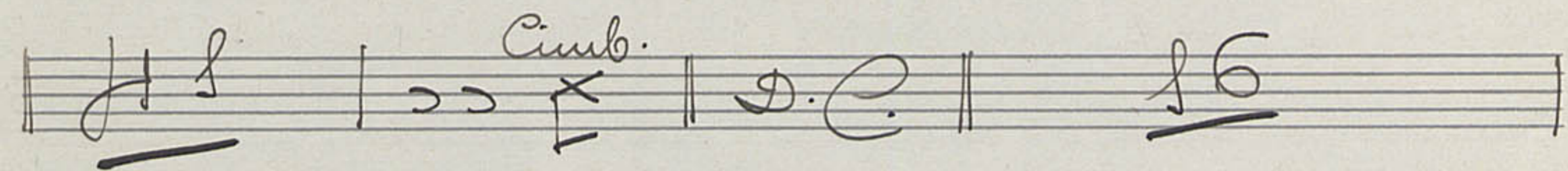
col palo al plato.



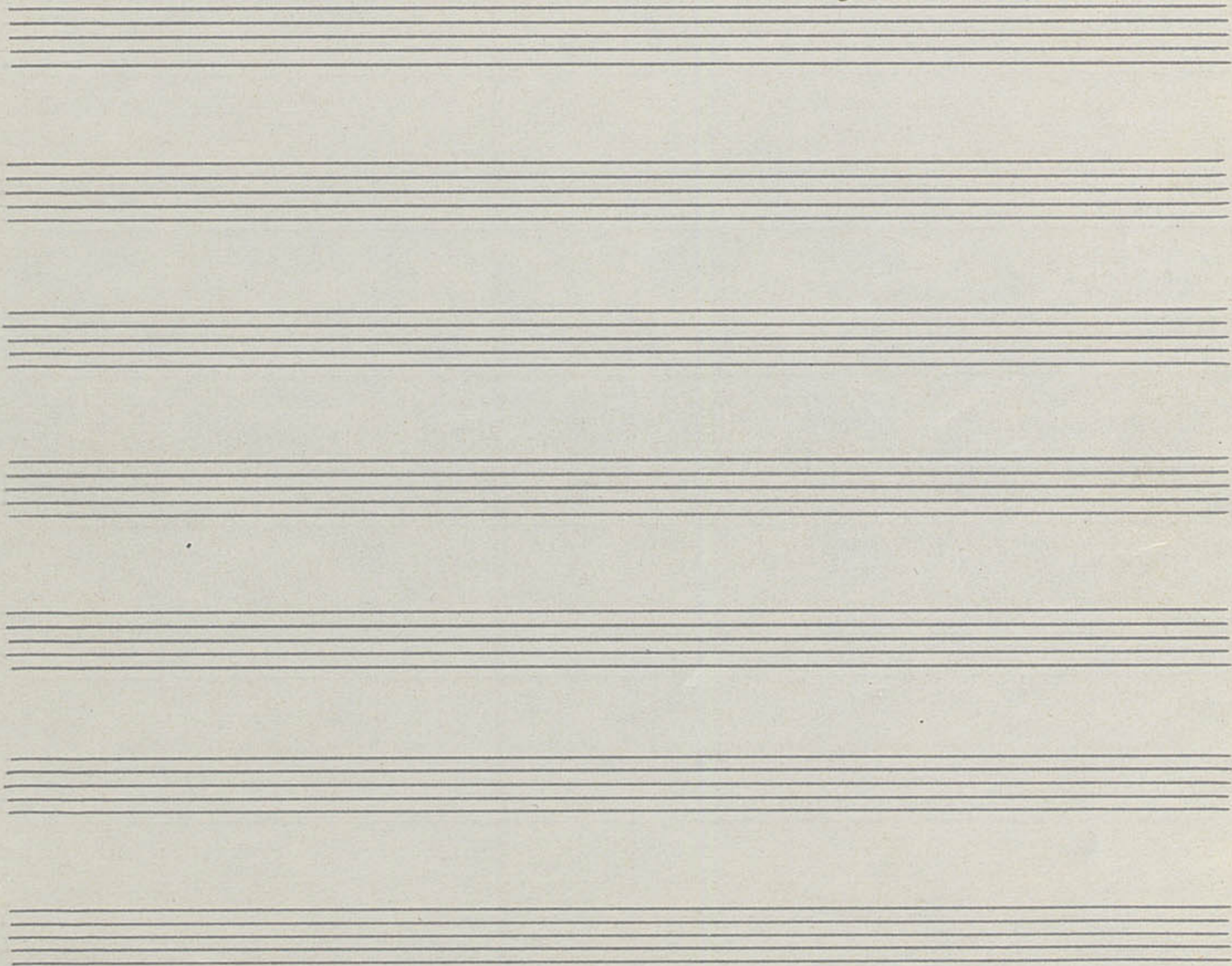
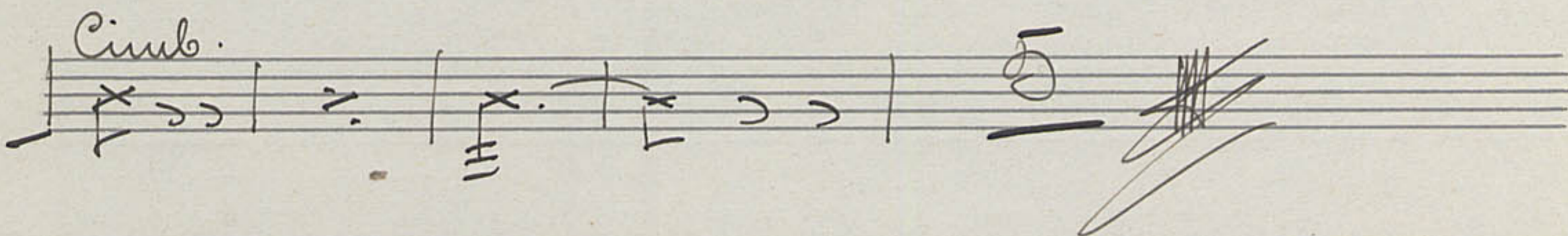
Ciembal



Ciemb.



Ciemb.



Sole Pa peletera

Nº 6

Violins

Handwritten musical notation for the first staff, featuring a treble clef, a key signature of three sharps (F#, C#, G#), and a 3/8 time signature. The notes are grouped with slurs and include dynamic markings such as *f* and *ff*. Above the staff, the word "Divisi" is written.

Handwritten musical notation for the second staff, starting with a *Pizz.* (pizzicato) marking. The notes are marked with accents and dynamic markings like *f* and *ff*. Above the staff, the word "For" is written.

Handwritten musical notation for the third staff, featuring a treble clef and a key signature of three sharps. The notes are marked with accents and dynamic markings like *f* and *ff*.

Handwritten musical notation for the fourth staff, starting with an *Arco.* (arco) marking. The notes are marked with accents and dynamic markings like *f* and *ff*.

Handwritten musical notation for the fifth staff, starting with a *Pizz.* marking and transitioning to an *Arco.* marking. The notes are marked with accents and dynamic markings like *f* and *ff*.

Handwritten musical notation for the sixth staff, starting with a key signature change to two sharps (F#, C#) and a 4/4 time signature. The word "Bordi" is written above the staff. The notes are marked with accents and dynamic markings like *f* and *ff*.

Handwritten musical notation for the seventh staff, featuring a treble clef and a key signature of two sharps. The notes are marked with accents and dynamic markings like *f* and *ff*.

Handwritten musical notation for the eighth staff, featuring a treble clef and a key signature of two sharps. The notes are marked with accents and dynamic markings like *f* and *ff*.

Handwritten musical notation for the ninth staff, starting with a *Pizz.* marking. The notes are marked with accents and dynamic markings like *f* and *ff*.

Handwritten musical notation for the tenth staff, starting with an *Arco.* marking. The notes are marked with accents and dynamic markings like *f* and *ff*.

Handwritten musical notation for the eleventh staff, featuring a treble clef and a key signature of two sharps. The notes are marked with accents and dynamic markings like *f* and *ff*. The staff ends with a double bar line and a flourish.

Two empty musical staves at the bottom of the page.

Sole Paperetera

nº 6

Baixa.

Allto

Handwritten musical notation on a single staff. It begins with a treble clef, a key signature of three sharps (F#, C#, G#), and a 3/8 time signature. The music starts with a forte (*ff*) dynamic marking. The notation includes eighth and sixteenth notes with accents, and ends with a double bar line and repeat signs.

Handwritten musical notation on a single staff, continuing the piece. It features a variety of rhythmic values and rests, ending with a double bar line.

Handwritten musical notation on a single staff, continuing the piece. It includes some beamed eighth notes and rests.

Handwritten musical notation on a single staff, continuing the piece. It features a mix of note values and rests.

Handwritten musical notation on a single staff, continuing the piece. It includes some beamed eighth notes and rests.

Handwritten musical notation on a single staff, continuing the piece. It features a mix of note values and rests.

Handwritten musical notation on a single staff, continuing the piece. It includes some beamed eighth notes and rests.

Handwritten musical notation on a single staff, continuing the piece. It includes a *de.* marking above the staff and ends with a double bar line.

Handwritten musical notation on a single staff, continuing the piece. It features a mix of note values and rests.

Handwritten musical notation on a single staff, continuing the piece. It includes some beamed eighth notes and rests, ending with a double bar line and a scribbled-out section.

Two empty musical staves.

Two empty musical staves.

Sole la peñera

Handwritten musical score for the piece "Sole la peñera". The score is written in treble clef with a key signature of three sharps (F#, C#, G#) and a 3/8 time signature. The music is arranged in two systems, each containing a vocal line and a piano accompaniment. The first system includes a dynamic marking of *ff* and a *Voz.* marking. The piano accompaniment features a rhythmic pattern of eighth notes and rests, with some chords marked with double sharps. The vocal line consists of eighth notes and rests, with some notes marked with accents. The score concludes with a double bar line and repeat signs.

Handwritten musical notation for the first system, consisting of two staves. The notation includes various notes, rests, and dynamic markings.

Handwritten musical notation for the second system, featuring complex chordal structures and melodic lines.

Handwritten musical notation for the third system, including a large bracketed section in the upper staff.

Handwritten musical notation for the fourth system, showing rhythmic patterns and melodic development.

Handwritten musical notation for the fifth system, starting with a double bar line and the marking "D.C.".

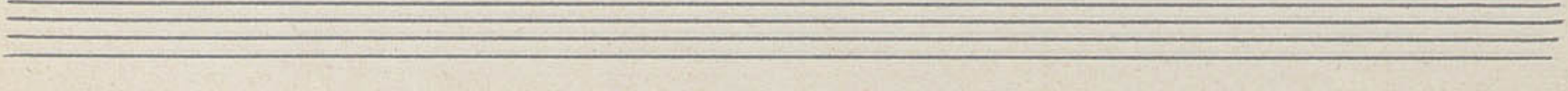
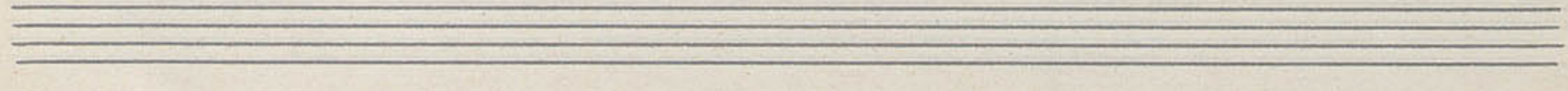
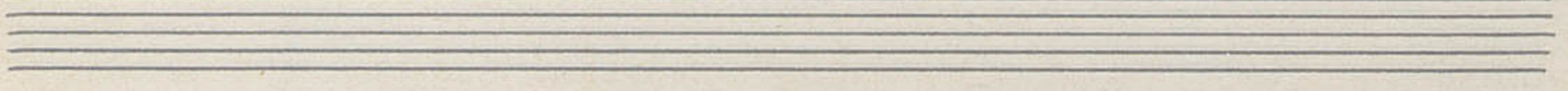
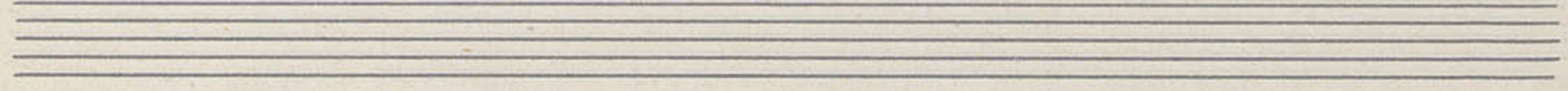
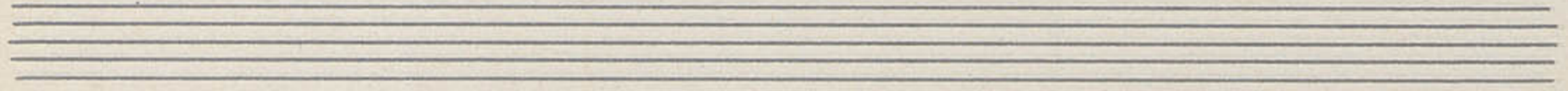
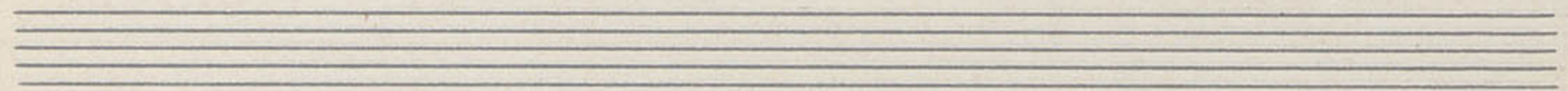
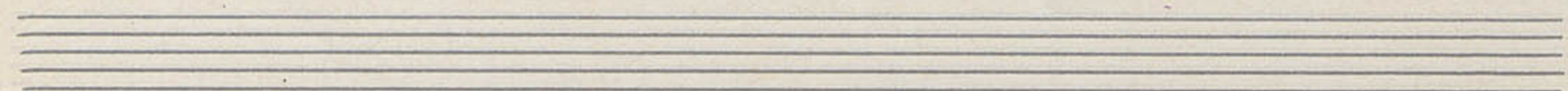
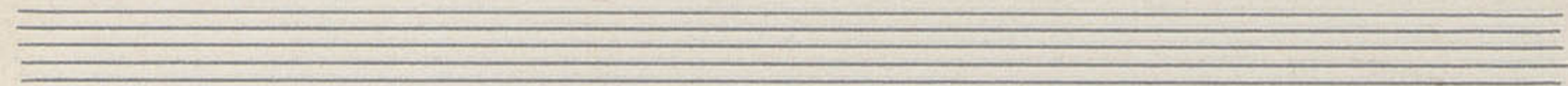
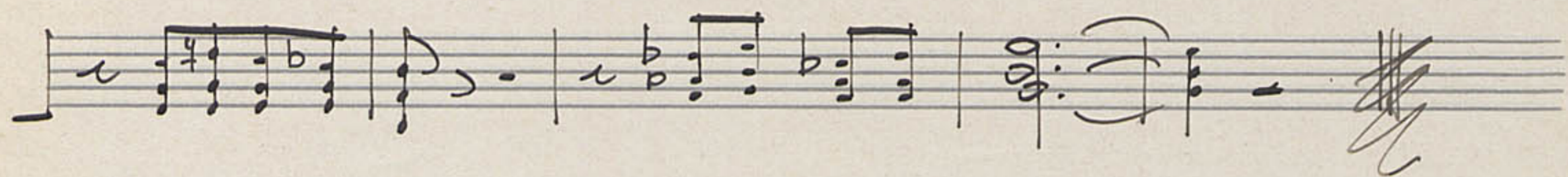
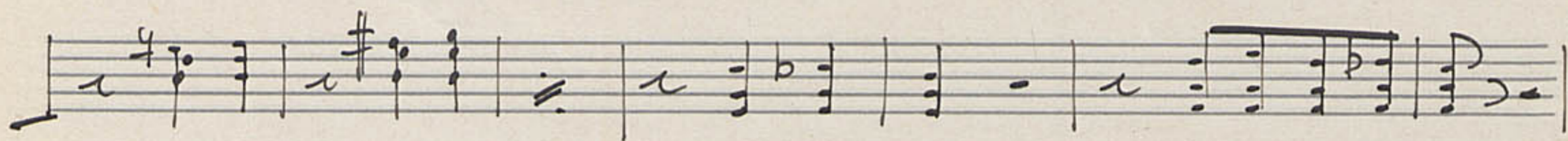
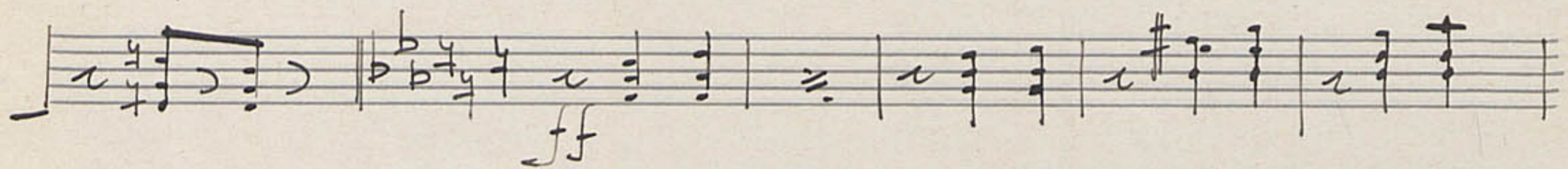
Handwritten musical notation for the sixth system, concluding with a double bar line and a flourish.

Sole la peletera

nº 8

Ванбокеон

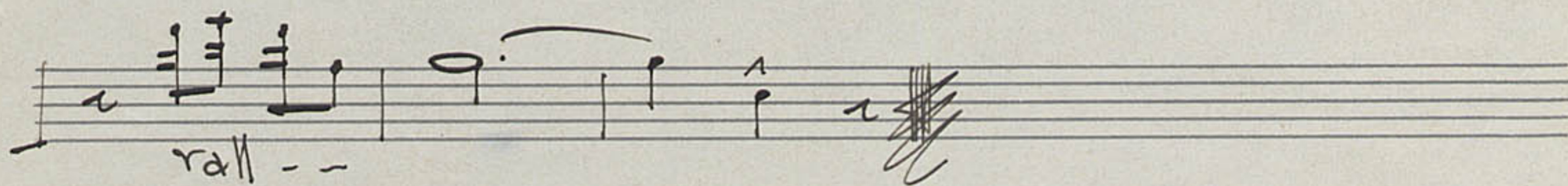
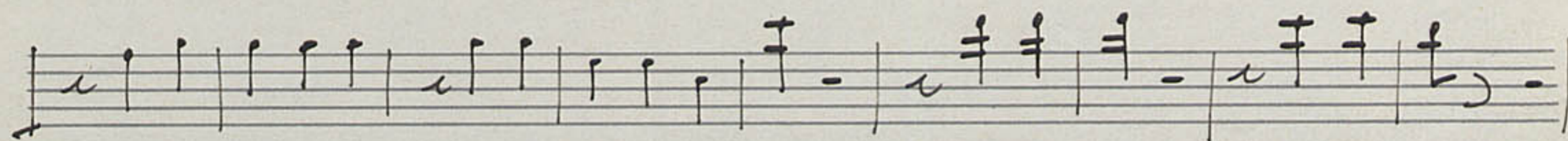
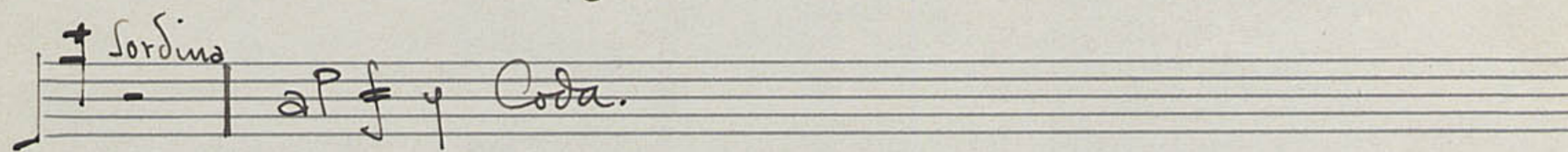
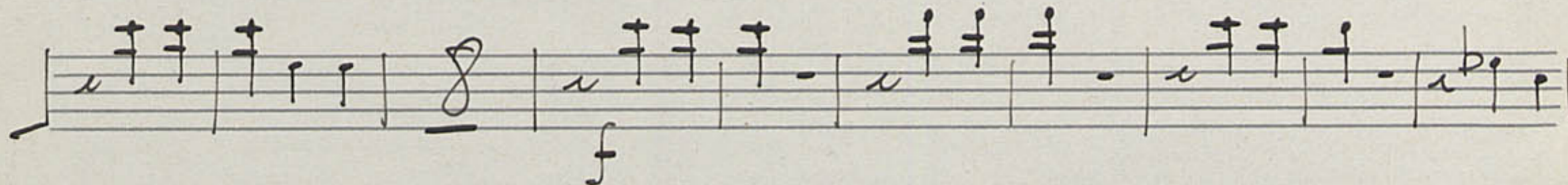
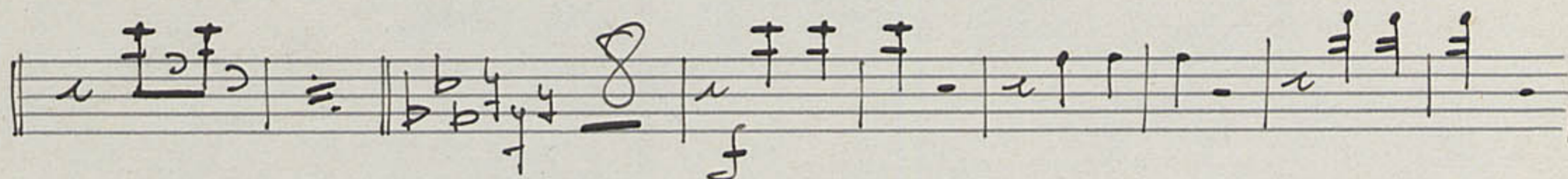
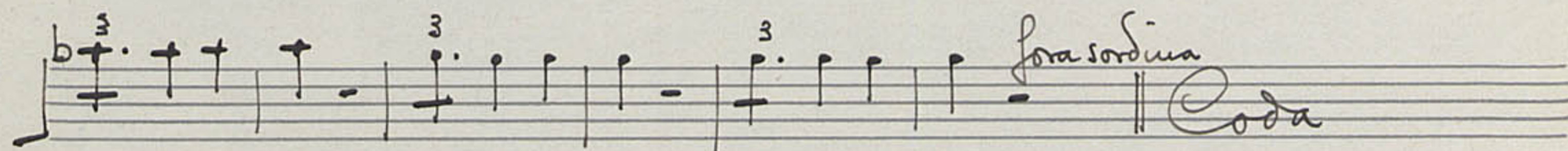
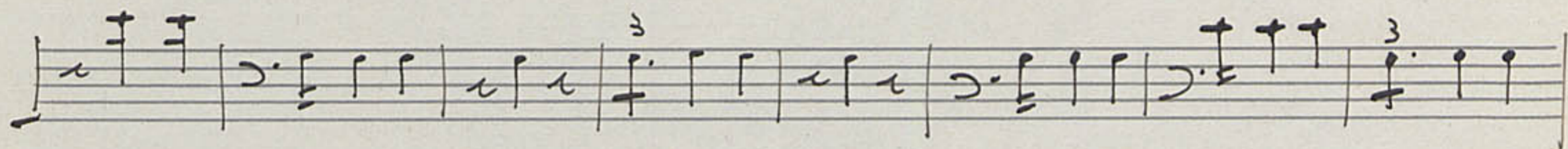
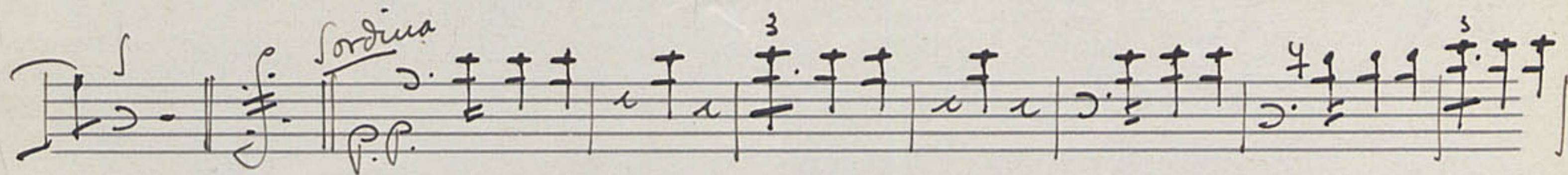
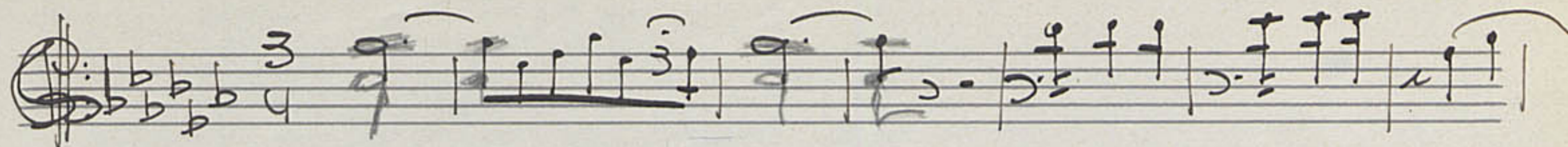
Handwritten musical score for 'Sole la peletera' (Ванбокеон), numbered 8. The score is written on ten staves. The first staff is in treble clef with a key signature of three flats (B-flat, E-flat, A-flat) and a 3/4 time signature. It begins with a forte (ff) dynamic and a tempo marking of 8^{mo}. The second staff is in bass clef with a 'loco.' marking. The score includes various musical notations such as triplets, slurs, and dynamic markings like 'pp.' and 'q.'. The piece concludes with a double bar line on the tenth staff.



Sole la pelétera

nº 8

Zornbo



Sole la peñera

Nº 8

Drums

Vals $\frac{3}{4}$ *Pato.* 32

Caja

Bag al plato.

Bag. al plato

Caja.

Sole la peletera

No 8.

Ban Durrias (2)

Vals *ff.* *(Solo)*

ff. *Solo.*

Divisi-8as

P.

siempre Divisi 8as

Sole la peñera

Nº 8

Baix. o Falso

Vals $\text{♩} = 4$ $\text{♩} = 3$

2a Coda *pp* Coda como 2a

Coda

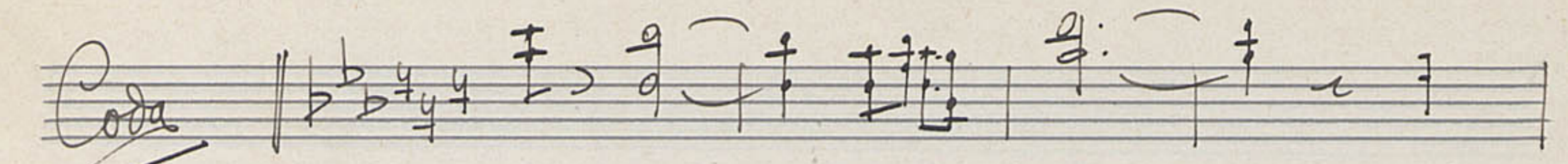
Sole la pelétera

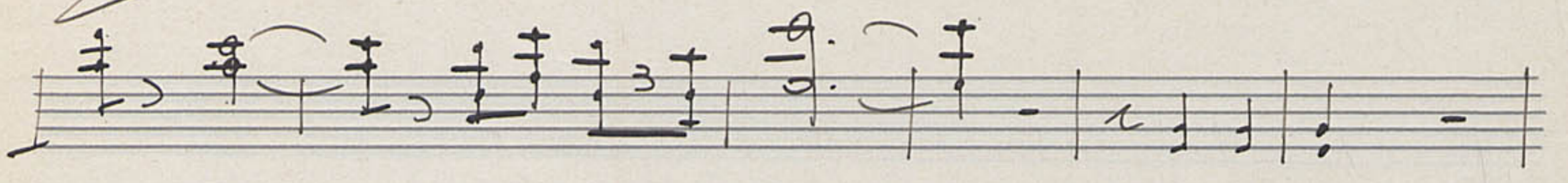
Nº 8

Violins

Vals

unis

Coda 



Finis 

