

Alto, Hollywood!!

Nº Reforma

Rosa Negra

Blues

Handwritten musical score for Alto, Hollywood!! The score is written on five staves. The first two staves are for the Alto instrument, with a treble clef and a key signature of two flats (Bb). The third staff is for the vocal line, with lyrics in Spanish. The fourth and fifth staves are for the piano accompaniment, with a grand staff (treble and bass clefs). The score includes various musical notations such as notes, rests, and dynamic markings. There are also circled letters (A, B, C, D, E, F, G) indicating specific sections or chords. The tempo is marked 'Alto' and the style is 'Blues'. The title is 'Hollywood!!' and the piece is 'Nº Reforma' by Rosa Negra. The lyrics are: 'Ella Hay dos chi cos en la or - quista que por mi pierden el tu no ah! ah! ah! ah! ah! ah!'. The piano part includes the instruction 'Pianissimo' and 'Pianos'.

fla
 ah
 U. no to ca con tra - bajo y o tro to ca con cer

Como A B C

X2

ti no ah! ah! ah! *quedo* ah! ah!

D E F G

Piano

U no es un bi oxi ge - na do mo - re ni to el o - tro es

xol

y me mi ran y sus pi ran y yo al ver co mo me mi ran no ha go mas que dar tras

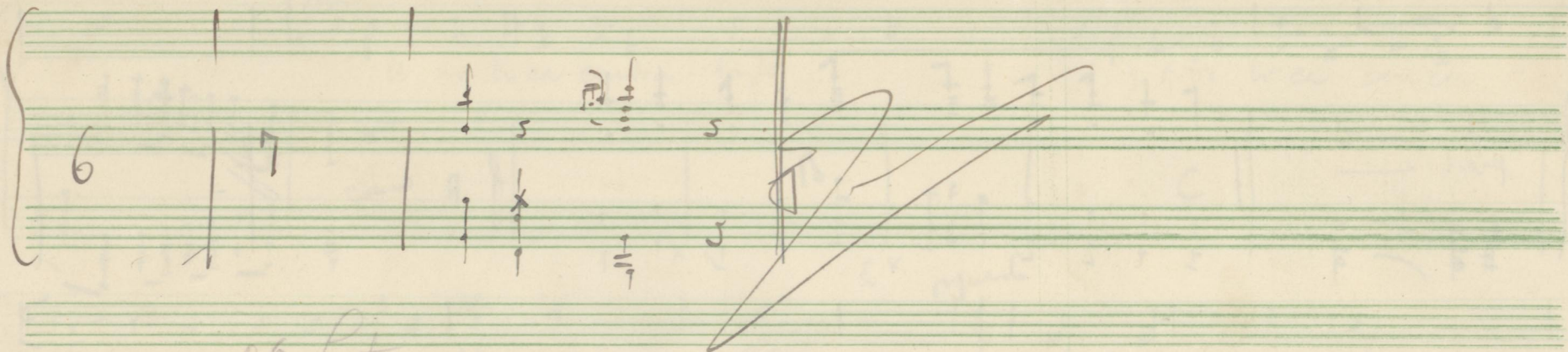
DE APLICACIONES LICENCIADAS

Handwritten musical notation on a grand staff. The top staff has a treble clef and a few notes. The middle staff has a treble clef and a "pizz" marking. The bottom staff has a bass clef and a key signature of one sharp (F#). There are various chordal and melodic notations throughout.

Handwritten musical notation on a grand staff. The top staff has a treble clef. The middle staff has a treble clef and a "pizz" marking. The bottom staff has a bass clef and a key signature of one sharp (F#). There are various chordal and melodic notations throughout.

Handwritten musical notation on a grand staff. The top staff has a treble clef. The middle staff has a treble clef and a "pizz" marking. The bottom staff has a bass clef and a key signature of one sharp (F#). There are various chordal and melodic notations throughout, including circled numbers 1, 2, 3, 4, and 5.

Handwritten musical notation on a grand staff. The top staff has a treble clef. The middle staff has a treble clef and a "pizz" marking. The bottom staff has a bass clef and a key signature of one sharp (F#). There are various chordal and melodic notations throughout, including circled numbers 6 and 7, and a section labeled "corno" with numbers 1 through 5.



2^a Letra

Yo estoy loca noche y día
sin saber con cual me quedo

(Orquesta) ah! ah! ah!
(ella) ah! ah! ah!

(ella) pues si aquel está que atufa
este está que me da miedo

ah ah ah
ah ah ah

Y los dos tocan de un modo
que escuchándolos tocar

yo no sé que me parece
que mi cuerpo se estremece
y no paro de bailar.