

Sax 1° (Alto mib)

= Belmonteño =

Pasodoble Torero.

J. Guerrero

Op. de Pasodoble

A handwritten musical score for a piece titled "Op. de Pasodoble". The score is written on ten staves. The first staff begins with a treble clef, a key signature of two sharps (F# and C#), and a 2/4 time signature. The music consists of a series of rhythmic patterns, primarily eighth and sixteenth notes, with various accents and slurs. The notation is dense and characteristic of a pasodoble. The piece concludes with a double bar line and a fermata on the final note.

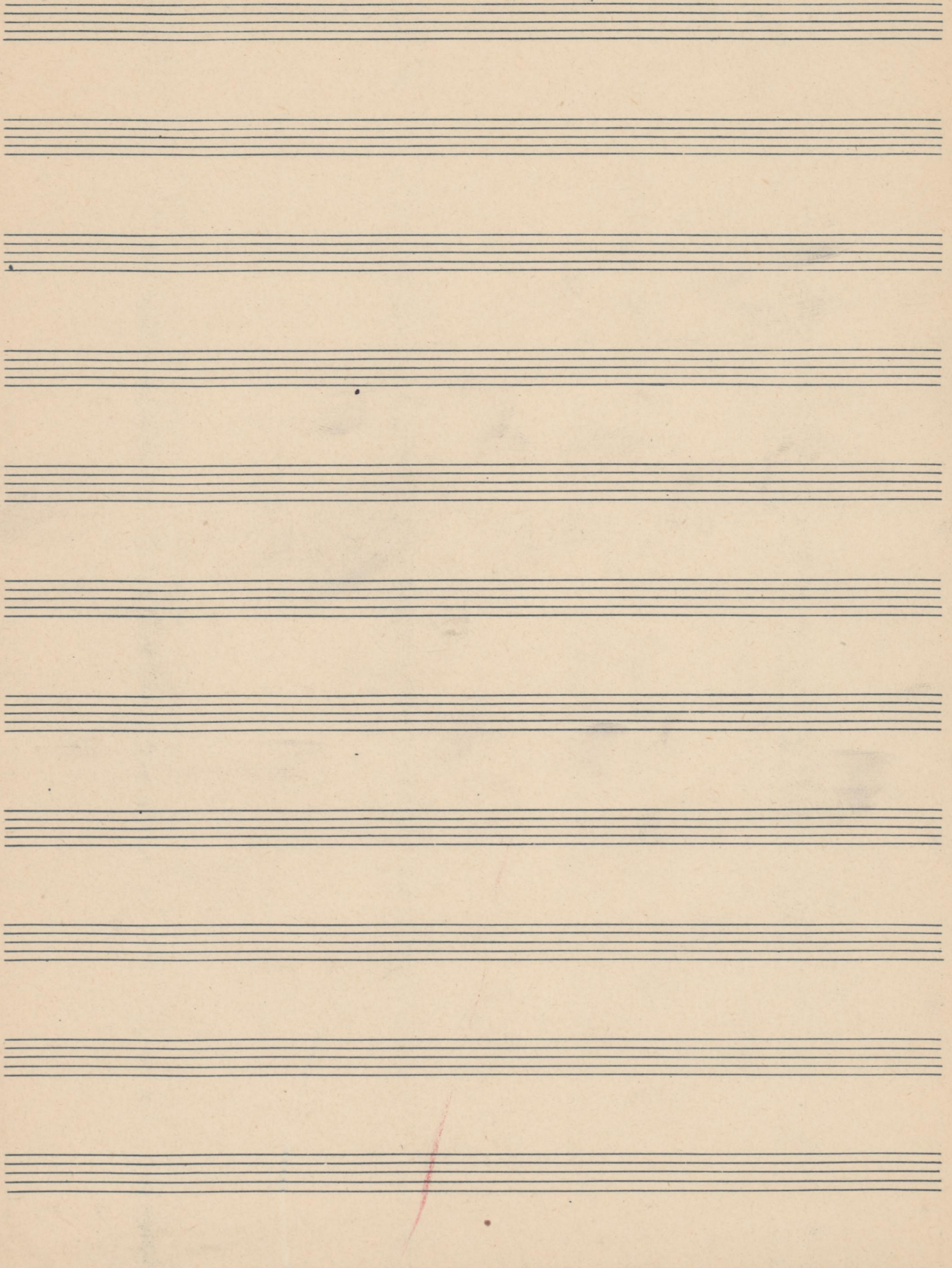
LEGADO GUERRERO. ICCMU

Handwritten musical notation for "LEGADO GUERRERO. ICCMU". The notation is on a single staff, featuring a treble clef, a key signature of two sharps, and a 2/4 time signature. It contains several measures of music, including a prominent five-measure rest in the final measure. The piece ends with a double bar line and a fermata.

SOBILDAD GENERAL DE AUTORES DE ESPAÑA-LIRICOS

Handwritten musical score for guitar, consisting of ten staves of music. The notation includes various rhythmic values, accidentals, and articulation marks. A double bar line with first and second endings is present on the sixth staff. The page number '26' is written at the end of the sixth staff.

LEGADO GUERRERO. ICCMU



SOCIEDAD GENERAL DE EDITORES DE ESPAÑA LÍPICOS

LEGADO GUERRERO. ICCMU

Sax ^{2^o} (Tenor n/b)

Belmonteño

Procedible Torero.

J. Guerrero

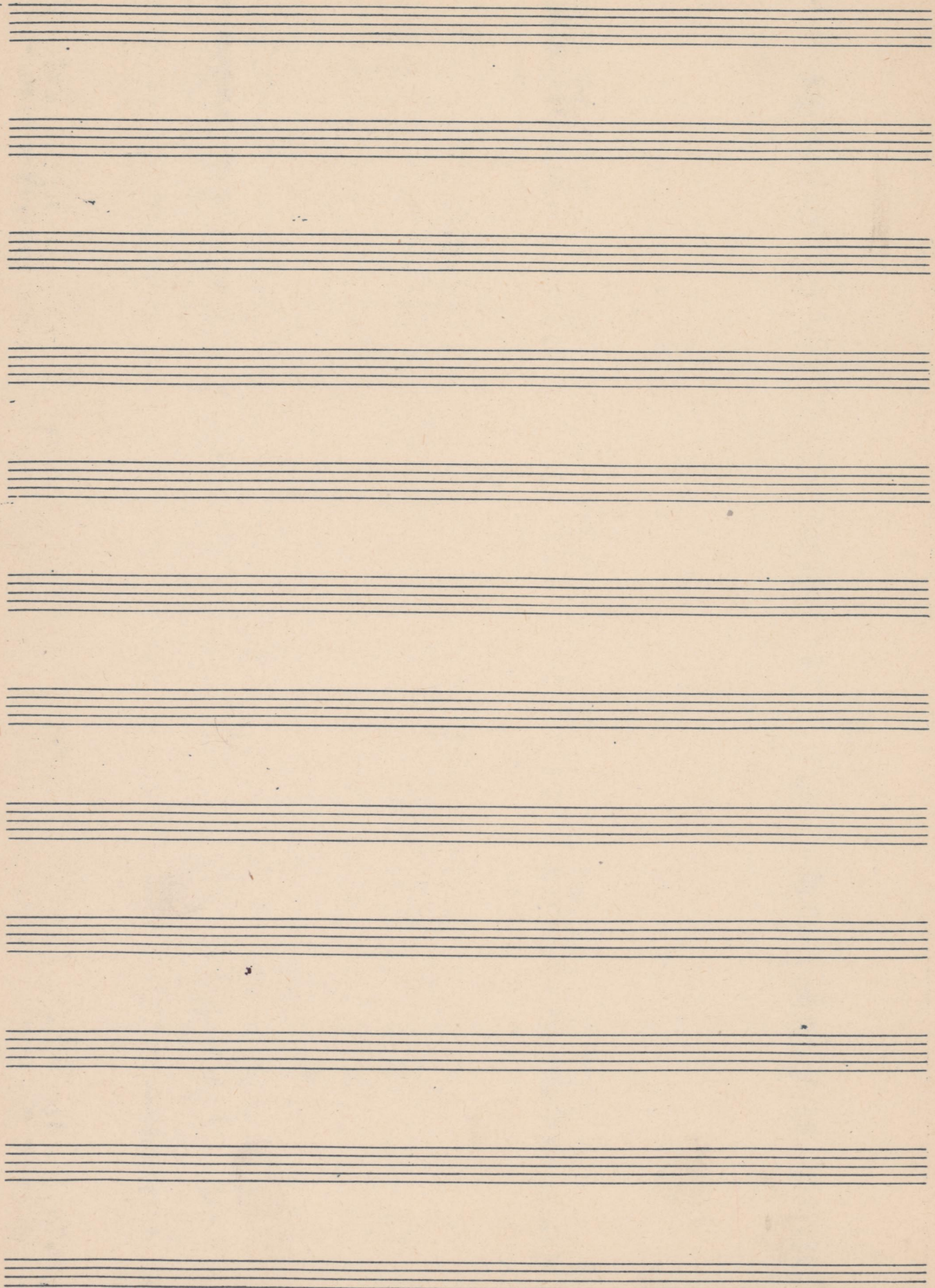
Tempo de Pasodoble

The image shows a handwritten musical score for a piece titled "Tempo de Pasodoble". The score is written on 12 staves. The first staff begins with a treble clef, a key signature of two sharps (F# and C#), and a 2/4 time signature. The music is characterized by rhythmic patterns typical of a pasodoble, including eighth and sixteenth notes, often with accents. There are several dynamic markings, including *ff* (fortissimo) and *mf* (mezzo-forte). The score includes various musical notations such as slurs, ties, and fermatas. The piece concludes with a final double bar line and a 2/4 time signature.

SOCIEDAD GENERAL DE AUTORES DE ESPAÑA-LIRICOS

Handwritten musical score on ten staves. The notation includes various rhythmic values, accidentals, and dynamic markings. The fourth staff features first and second endings marked "1a" and "2a". The page number "26" is written at the end of the fourth staff.

LEGADO GUERRERO. ICCMU



SOCIEDAD GENERAL DE EDITORES DE LIBROS Y DISCOS

LEGADO GUERRERO. ICCMU

11

Sax 3^o (Alto mb)

Belmonteño;

Pasodoble Torero.

J. Guerrero

Op. de Paro doble

16

108

BIBLIOTECA GENERAL DE LA UNIVERSIDAD DE LOS ANGELES

A handwritten musical score consisting of ten staves. The notation includes various rhythmic values such as eighth and sixteenth notes, rests, and accidentals (sharps and naturals). There are several slurs and accents throughout the piece. A first ending bracket is present on the seventh staff, with the number '12' written above it. A measure number '26' is written below the seventh staff. The score concludes with a double bar line and a sharp sign on the final staff.

LEGADO GUERRERO: ICCMU

25

Trompeta 1^a (en sib)

Belmonteño

Pasodoble torero

Jacinto Guerrero

Op. de Pasacoble

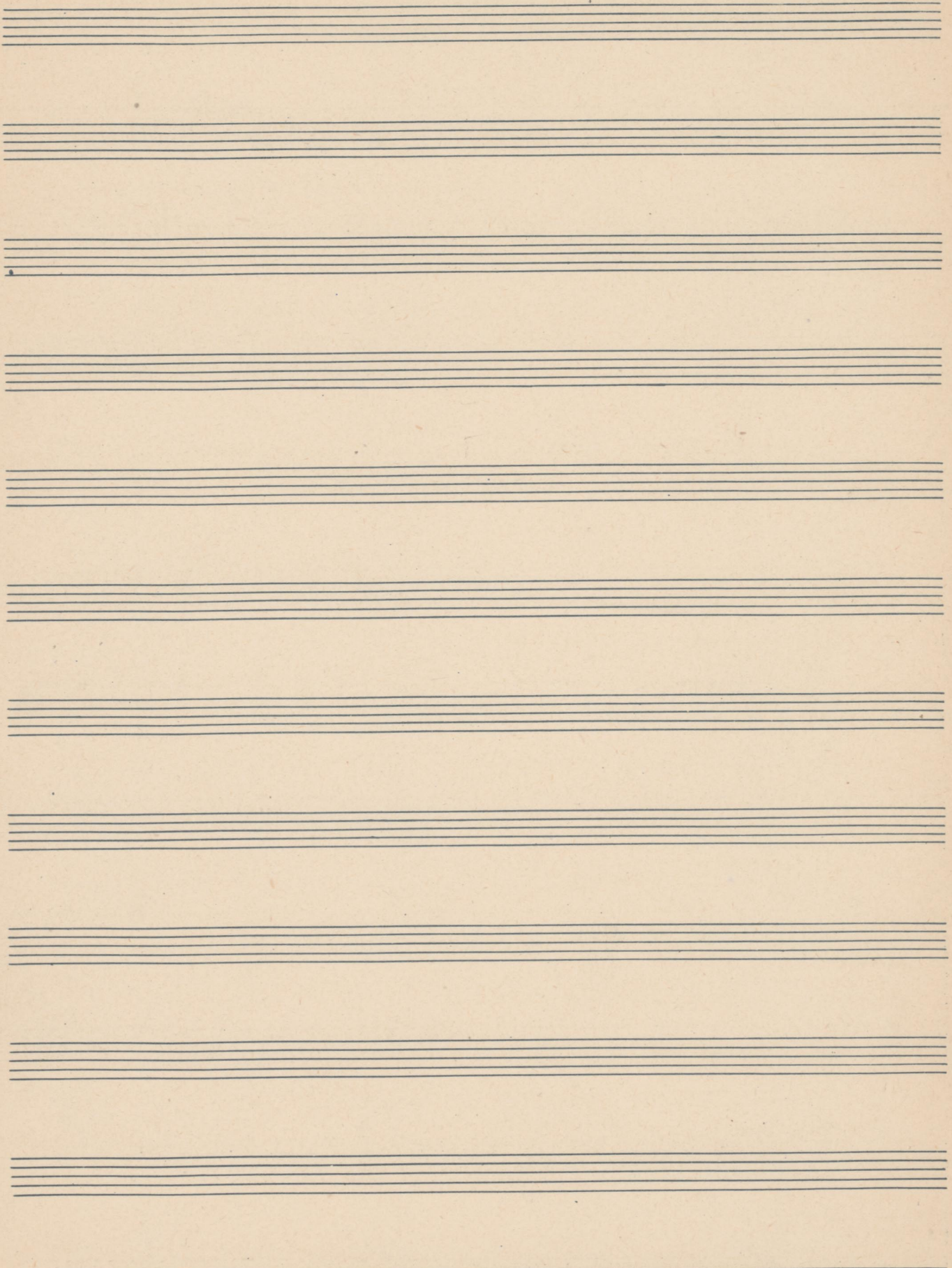
Handwritten musical score for 'Op. de Pasacoble'. The score is written on ten staves. The first staff begins with a treble clef, a key signature of one sharp (F#), and a 9/8 time signature. The music consists of a single melodic line with various rhythmic values, including eighth and sixteenth notes, and rests. There are several dynamic markings, including accents and slurs. The score includes several measures with measure numbers: 16, 17, and 33. The word 'Sordina' is written above the music in several places, indicating a change in timbre. The notation is clear and legible, with some corrections and erasures visible.

LEGADO GUERRERO. ICCMU

SOCIEDAD GENERAL DE AUTORES DE ESPAÑA LÍRICOS

Handwritten musical score on ten staves. The notation includes various rhythmic values, slurs, and dynamic markings such as "1a" and "2a". The music is written in a single system across the ten staves.

Three empty musical staves at the bottom of the page.



Trompeta 2^a (ensib)

Belmonteño

Pasodoble torero

Jacinto Guerrero

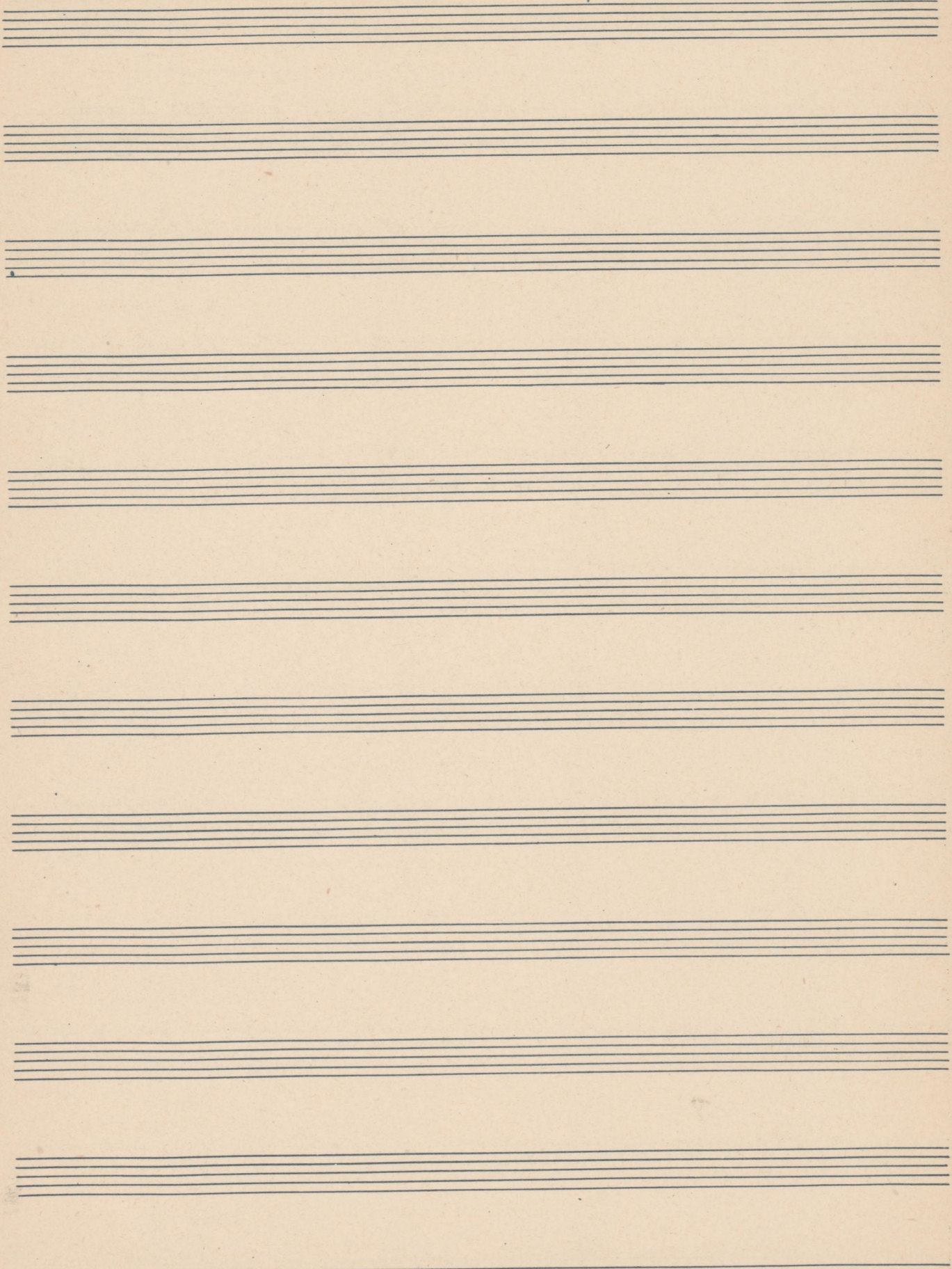
Op. de Pasodoble

Handwritten musical score for a Pasodoble. The score consists of 12 staves of music. The first staff begins with the title 'Op. de Pasodoble' and a treble clef with a key signature of two sharps (F# and C#). The music is written in a rhythmic style characteristic of a pasodoble, with frequent eighth and sixteenth notes. The score includes several dynamic markings: 'ff' (fortissimo) in the first staff, 'Sord^{ta}' (sordina) in the third and seventh staves, and 'p' (piano) in the fourth and sixth staves. There are also handwritten notes such as 'sib' and 'do' with arrows pointing to specific notes. The notation includes various note values, rests, and articulation marks like accents and slurs.

SOCIEDAD GENERAL DE AUTORES DE ESPAÑA LÍRICOS

Handwritten musical score on eight staves. The notation includes various rhythmic values, slurs, and dynamic markings. The first staff begins with a treble clef and a common time signature. The second staff contains first and second endings, marked '1a' and '2a'. The third staff features a fermata over a measure. The fourth staff has a 2/4 time signature. The fifth staff includes a sharp sign (#) and a plus sign (+). The sixth staff has a plus sign (+) and a fermata. The seventh staff has a fermata. The eighth staff has a sharp sign (#) and a plus sign (+). The notation is dense and includes many slurs and accents.

Four empty musical staves, each consisting of five horizontal lines, arranged vertically.



Trombon

Belmonteño:

Pasodoble Torero.

Guerrero

Op. de Pasodoble

LEGADO GUERRERO. ICCMU

SOCIEDAD GENERAL DE AUTORES DE ESPAÑA-LÍRICOS

GENERAL DE LOS ANGELES DE LOS ANGELES

Handwritten musical score for guitar, consisting of 12 staves. The notation includes various rhythmic values, accidentals, and dynamic markings. The key signature is one sharp (F#) and the time signature is 4/4. The score concludes with a double bar line and a repeat sign.

LEGADO GUERRERO. ICCMU

Violin

Belmonteño

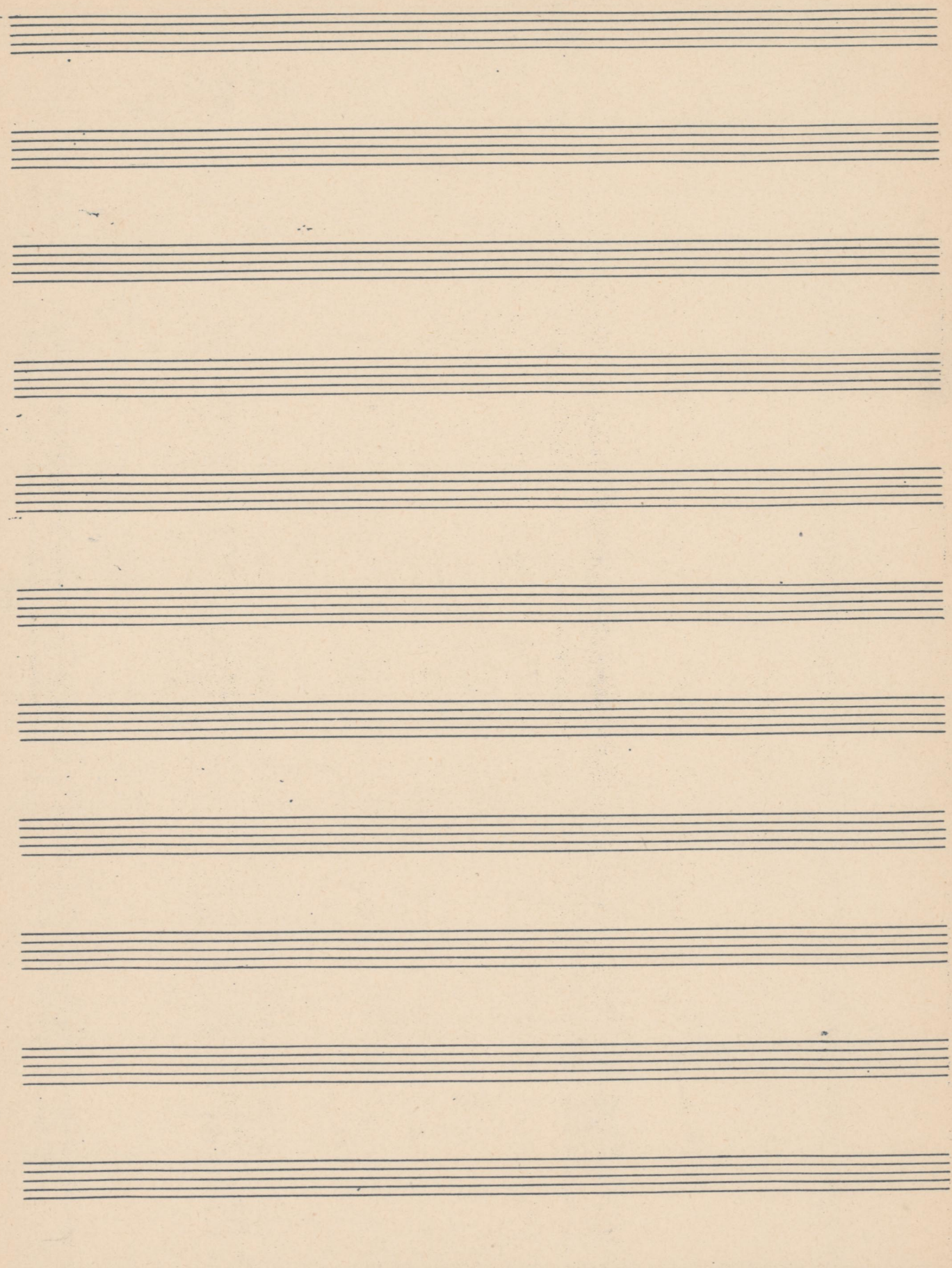
Pasodoble torero

J. Guerrero

Op. 10 No. 10

This is a handwritten musical score for a piece titled "Op. 10 No. 10". The score is written on 12 staves. The first staff begins with the title and a treble clef. The music is characterized by complex rhythmic patterns, including many beamed sixteenth and thirty-second notes. There are several measures with rests, and the piece concludes with a double bar line. The notation includes various musical symbols such as slurs, accents, and dynamic markings.

Handwritten musical score on ten staves. The notation includes various rhythmic values, accidentals, and dynamic markings such as 'p' and 'div:'. The music is written in a single system across the staves.



Violin

Belmonteño

Paradoble Torero.

J. Guerrero

Op. de Pasocoble

5+5
ne
ca

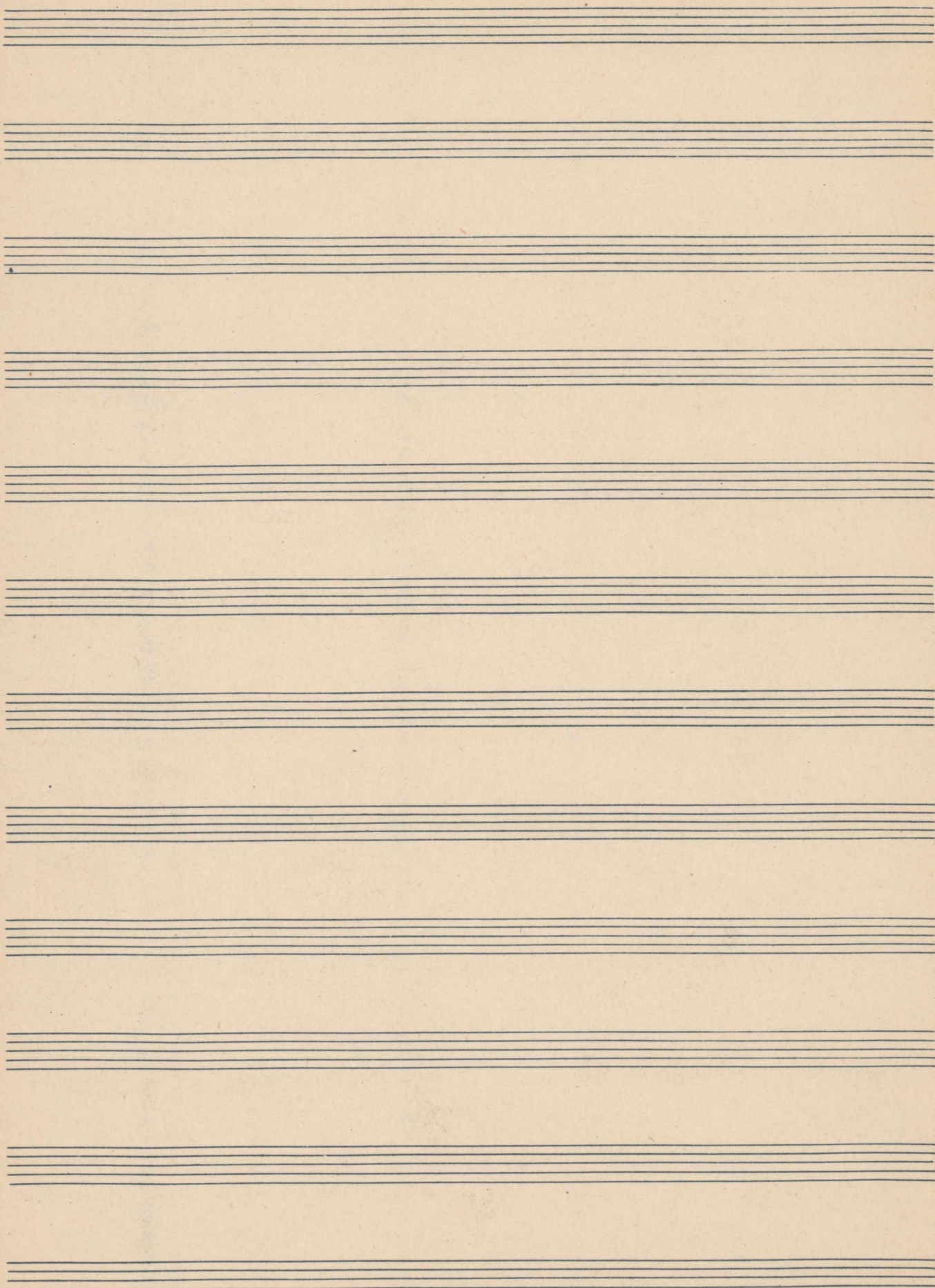
LEGADO GUERRERO. ICGMU

SOCIEDAD GENERAL DE AUTORES DE ESPAÑA LÍDICOS

COLECCIÓN GENERAL DE ACORDEONES DE LA RAJA LIRIO

A handwritten musical score for accordion, consisting of 12 staves. The notation includes various rhythmic values, accidentals (sharps and naturals), and articulation marks such as slurs and accents. The first staff begins with a treble clef and a key signature of one sharp (F#). The score is densely written with many beamed notes and rests. There are some handwritten annotations, including a circled '5' and a circled '7' in the first staff, and '1^a' and '2^a' in the sixth staff. The piece concludes with a double bar line and a decorative flourish.

LEGADO GUERRERO. ICCMU



SOCIEDAD GENERAL DE EDITORES DE ESPAÑA LÍPICOS

LEGADO GUERRERO. ICCMU

Violin

Belmonteño

Paseable torero

J. Guerrero

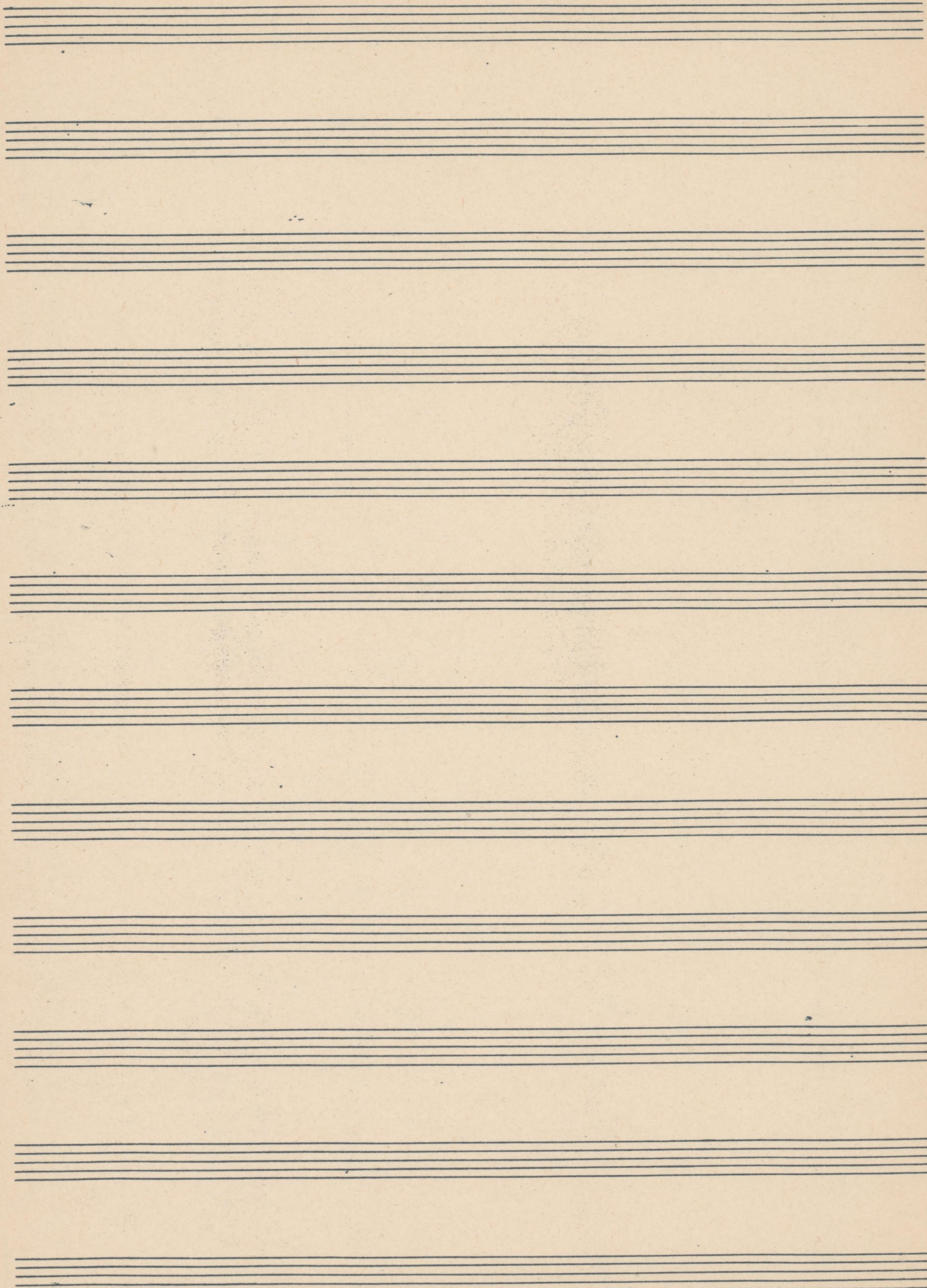
Épo de Pasadoble

A handwritten musical score for a piece titled "Épo de Pasadoble". The score is written on 12 staves. The first staff begins with a treble clef, a 2/4 time signature, and a key signature of one sharp (F#). The music is characterized by dense, rhythmic patterns, including many triplets and sixteenth-note runs. The notation includes various ornaments and slurs. The piece concludes with a double bar line on the final staff.

COJILIDAD GENERAL DE AUTORES DE LOS ANA LITRICO

Handwritten musical score on ten staves. The notation includes various rhythmic values, accidentals, and dynamic markings such as 'p' and 'f'. There are also some handwritten annotations and a large flourish at the end of the piece.

LEGADO GUERRERO. ICCMU



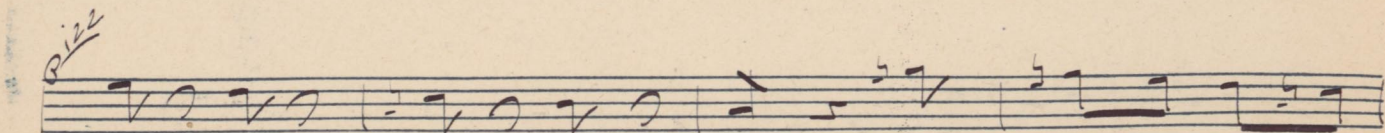
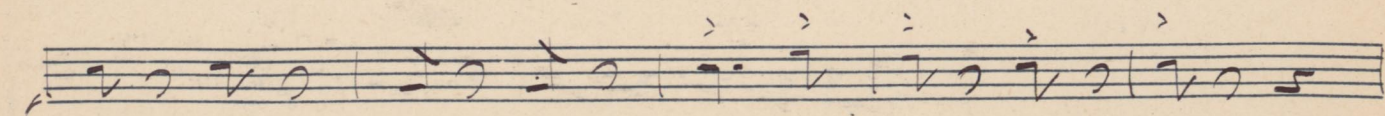
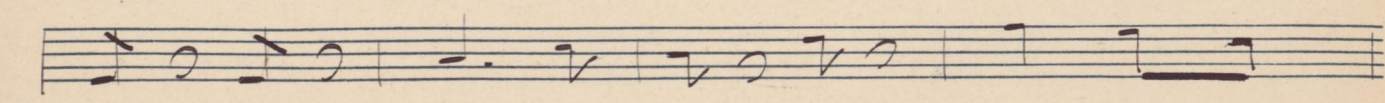
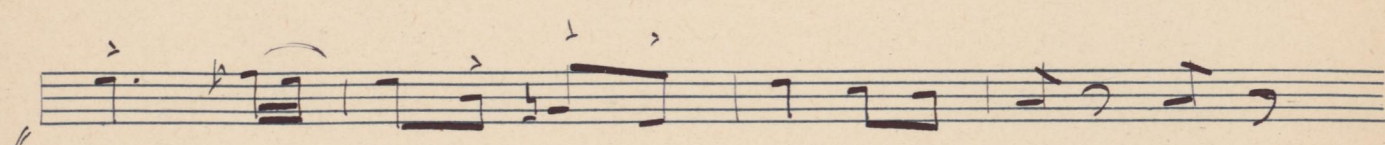
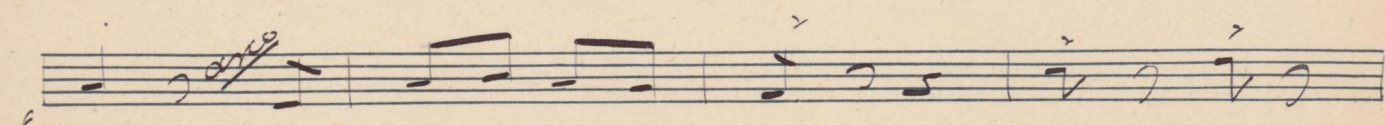
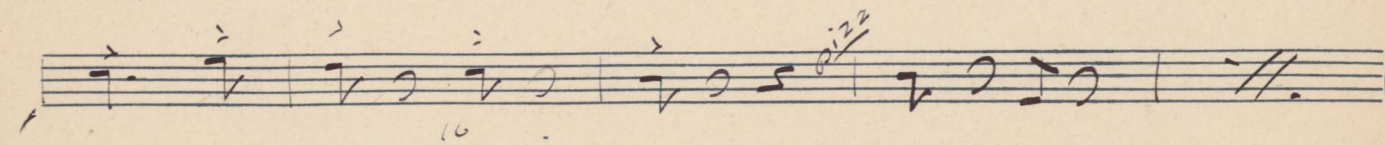
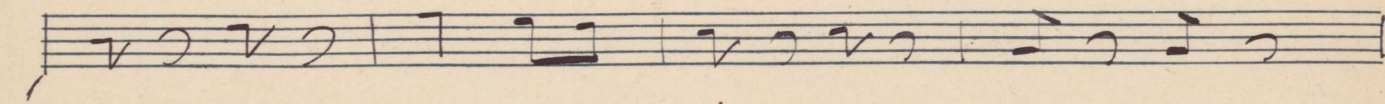
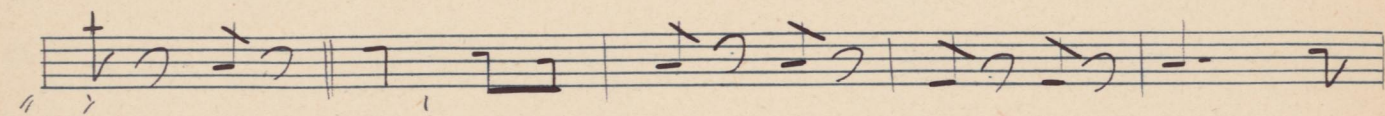
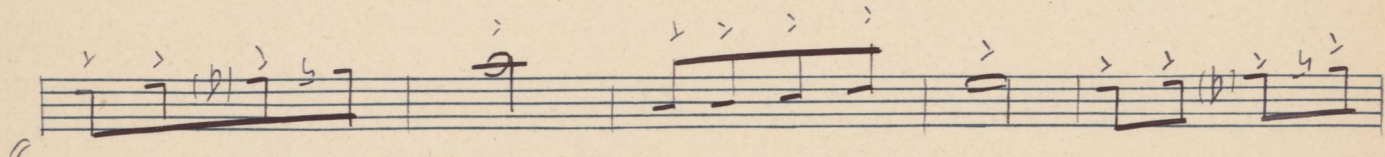
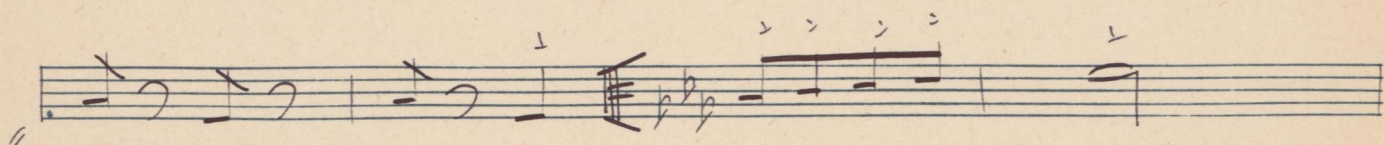
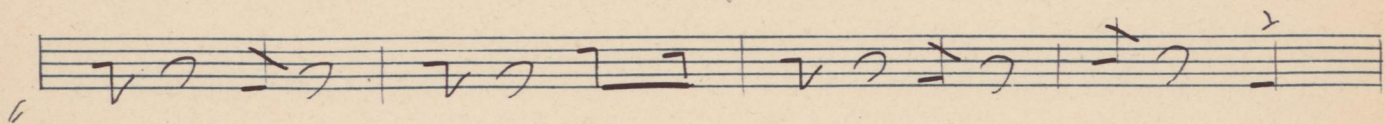
C. B. G. G. O

Behnonteiro

Pasodoble Torero

J. Guerrero

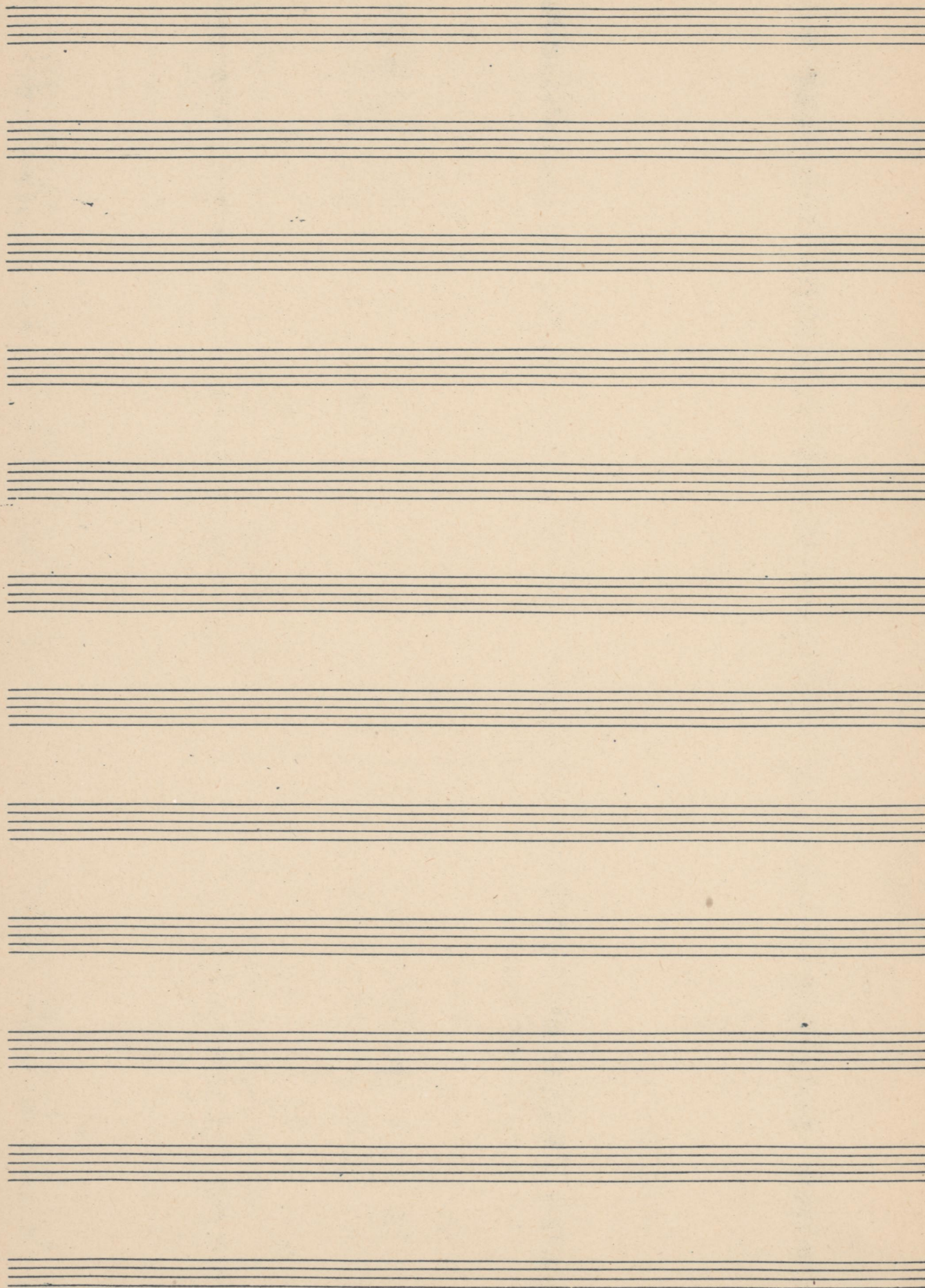
Épo: de Pasodoble | $\Phi = 2$



A handwritten musical score consisting of ten staves. The notation includes various rhythmic values, accidentals, and dynamic markings. Key annotations include:

- Staff 1: *arco* above the staff.
- Staff 2: *arco* above the staff.
- Staff 3: *pizz* above the staff.
- Staff 4: *arco* above the staff.
- Staff 5: *arco* above the staff.
- Staff 6: *arco* above the staff.
- Staff 7: *arco* above the staff.
- Staff 8: *arco* above the staff.
- Staff 9: *arco* above the staff.
- Staff 10: *arco* above the staff.

There are also some other markings such as *pizz* and *mi* scattered throughout the score. The notation is dense and appears to be a working draft.



SOCIIDAD GENERAL DE AUTORES DE FORMACIÓN LINGÜÍSTICA